

## APPENDIX 2.9 - LLANBRYNMAIR NON-AIL TRANSPORT TRAFFIC ON STRATEGIC NETWORK

---

Project:	<b>Mid Wales (Powys) Wind Farms</b>	Job No:	<b>60283248</b>
Subject:	<b>Assessment of the Llanbrynmair Construction Traffic on the Strategic Road Network</b>		
Prepared by:	<b>Steve Moss</b>	Date:	<b>17/12/13</b>
Checked by:	<b>Steve Carmody</b>	Date:	<b>19/12/13</b>
Approved by:	<b>Kevin Martin</b>	Date:	<b>19/12/13</b>

---

## Introduction

This Technical Note assesses the impact of the Llanbrynmair wind farm on the Strategic road Network and should be read in conjunction with the AECOM Report *Mid Wales (Powys) Wind Farms – Cumulative Impact Assessment of non-AIL Construction Traffic on the Strategic Road Network*, dated December 2013, and is referred to as the Cumulative Report within this note.

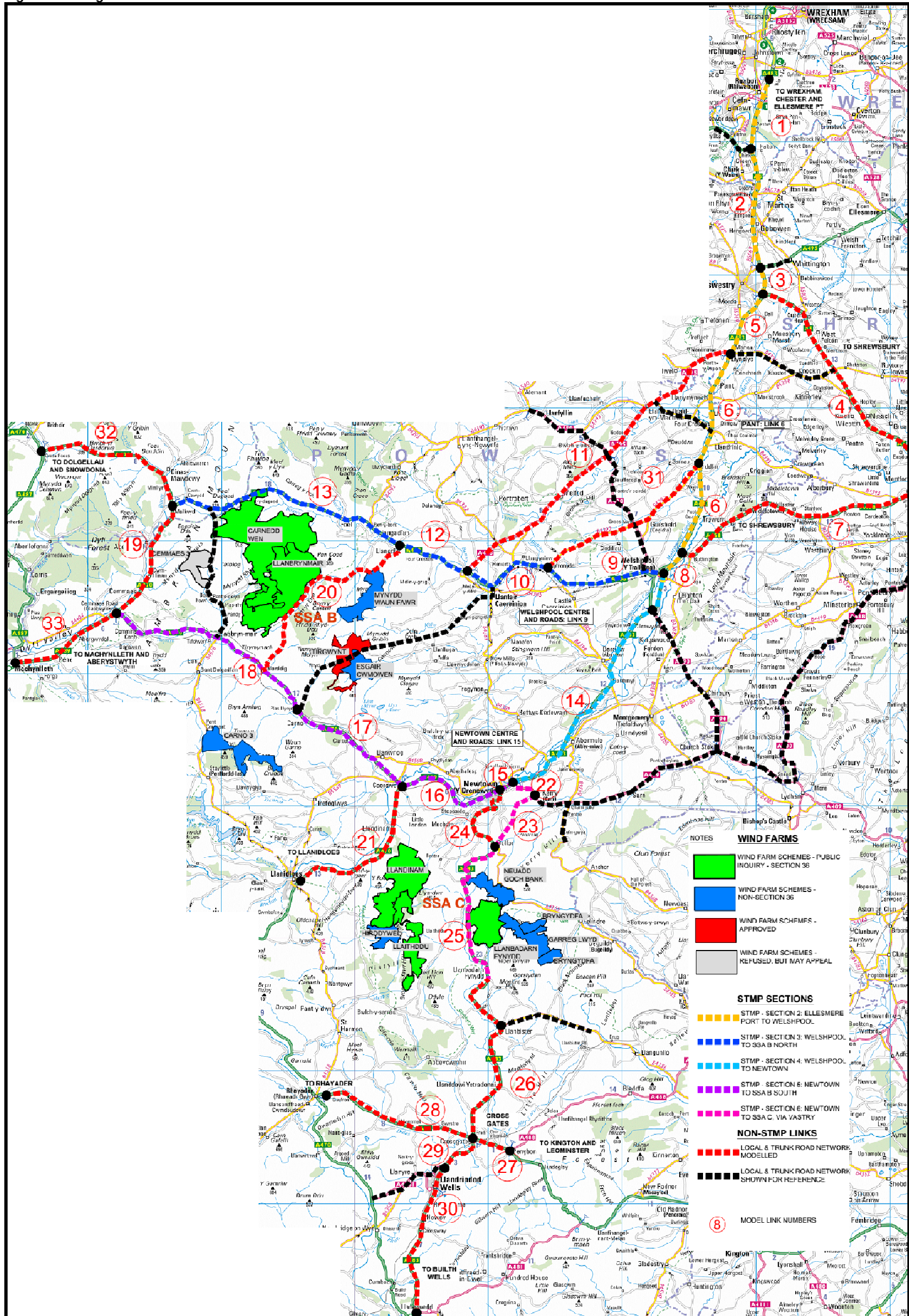
The Cumulative Report assesses the impact from all Section 36 and non-Section 36 wind farm proposals on the strategic road network, whereas this note identifies the impact associated with the Llanbrynmair wind farm only.

The traffic model and the traffic distribution are described within the Cumulative Report. Traffic generation is detailed within the Llanbrynmair LTMP which was considered during Session 2 of the Inquiry.

## Strategic Road Network

The Strategic Road Network under consideration is detailed within **Appendix A, of the Cumulative Report**. For ease of reference is also shown below in Figure 1.

Figure 1 Strategic Road Network



Direct Tel: +44 (0)113 391 6212  
 T +44 (0)113 391 6800  
 F +44 (0)113 391 6899  
 E stephen.moss@aecom.com  
 www.aecom.com

5th Floor  
 2 City Walk  
 Leeds  
 LS11 9AR  
 United Kingdom

## Traffic Assessment Criteria

The assessment criteria are detailed within Section 4 of the Cumulative Report.

A full description of the criteria is given in the Cumulative Report. For ease of reference the relevant tables are given below.

**Table 1** defines the magnitude of the traffic impact in terms of a percentage increase, **Table 2** provides the criteria against which the sensitivity of any receptor has been derived and **Table 3** provides the significance of the impact based upon the magnitude of the change and the sensitivity of the receptor.

**Table 1: Magnitude of Traffic Impact**

Magnitude	Impact
Substantial	Considerable deterioration/improvement in local conditions or circumstances (+90% increase in traffic)
Moderate	Readily apparent change in conditions or circumstances (60 – 90% increase in traffic)
Slight	Perceptible change in conditions or circumstances (30 – 60% increase in traffic)
Negligible	Very small change in conditions or circumstances (10 – 30% increase in traffic); and
No Impact	No discernible change in conditions (0 – 10% increase in traffic).

**Table 2: Sensitivity of Receptors**

Sensitivity	Receptor Description
Very High	Nationally or internationally important site with special sensitivity to increases in road traffic.
High	Regionally important site with special sensitivity to increases in road traffic.
Medium	Residential (with frontage onto road under consideration), educational, healthcare, leisure, public open space or town centre/local centre land use.
Low	Employment or out of town retail land use, such as retail park.

**Table 3: Assessment of Significance**

		Magnitude of Impact (Degree of Change)			
		Negligible	Slight	Moderate	Substantial
Receptor Sensitivity	Very High	Slight	Moderate or Large	Large or Very Large	Very Large
	High	Slight	Slight or Moderate	Moderate or Large	Large or Very Large
	Medium	Neutral or Slight	Slight	Moderate	Moderate or Large
	Low	Neutral or Slight	Neutral or Slight	Slight	Slight or Moderate

Direct Tel: +44 (0)113 391 6212  
 T +44 (0)113 391 6800  
 F +44 (0)113 391 6899  
 E [stephen.moss@aecom.com](mailto:stephen.moss@aecom.com)  
[www.aecom.com](http://www.aecom.com)

5th Floor  
 2 City Walk  
 Leeds  
 LS11 9AR  
 United Kingdom

## **Traffic Impact**

The impact in terms of actual vehicle numbers is included within **Appendix A**, and the increase in terms of a percentage increase in traffic for each month of the construction programme and also a yearly average is included within **Appendix B**, but the results can be summarised as follows, with the results being given for all traffic and HGV's only.

### *All Traffic*

For all traffic the traffic impact is less than 10% for all strategic road links for each month and each year between 2015 and 2022. As such, there is no traffic impact (defined as no discernible change from Error! Reference source not found.) from construction traffic overall and, accordingly, no significance.

### *HGV Traffic only*

With the exception of link 17, for HGV traffic only the impact is less than 10% for all strategic road links for each month and each year between 2016 and 2018. As such, there is no traffic impact (defined as no discernible change from Error! Reference source not found.) from construction traffic overall and, accordingly, no significance.

*Link 17, A470 between the A489 and Talerddig*, has negligible HGV traffic increases in 6 months of 2016 and 10 months in 2017. Only in 2017 does the annual HGV daily average increases exceed 10% (15.4%). Accordingly, in 2016 there is no HGV impact overall whilst there is negligible HGV impact and neutral or slight significance in 2017 overall. The same quantification of neutral or slight significance also applies to the individual months identified above.

## **Conclusions**

The construction traffic impact of Llanbrynmair wind farm on the adjacent strategic road network is not discernible and has no significance in accordance with IEA guidelines.

The HGV construction traffic impact is also not discernible and has no significance apart from the A470 in the vicinity of the site which has negligible traffic impact and neutral significance during 2017 overall and within a number of specific months in both 2016 and 2017.

In all cases, for both construction traffic overall and HGV construction traffic, the impact does not exceed the 30% increase in overall traffic identified by the IEA Guidelines as the screening threshold for assessment of potential significance.

---

**Appendix A – Llanbrynmair Impact Vehicle Numbers**

Jan-16

LINK INFORMATION		ALL TRAFFIC IS TWO WAY DAILY FLOWS, ON MONTHLY TIME PERIODS							
LINK	LOCATION	BASE NETWORK FLOWS		STMP FLOWS (BASE + DISTRIBUTED)		TOTAL FLOWS		% IMPACT	
		AADT	HGV	AADT	HGV	AADT	HGV	AADT	HGV
1	A483 - FROM A5 TO A539 SOUTH OF WREXHAM	25291	2089	0	0	25291	2089	0.0%	0.0%
2	A5 - FROM A5 CHIRK TO A495 NORTH OF OSWESTRY	25021	2026	0	0	25021	2026	0.0%	0.0%
3	A5 - BETWEEN A483 & A495, EAST OF OSWESTRY	25252	2347	0	0	25252	2347	0.0%	0.0%
4	A5 - EAST OF A483 TOWARDS SHREWSBURY	19182	1288	0	0	19182	1288	0.0%	0.0%
5	A483 - FROM A495 TO A5	12415	1047	0	0	12415	1047	0.0%	0.0%
6	A483 - FROM A458 TO A495	8696	918	7	4	8702	922	0.1%	0.4%
7	A458 - FROM A483 TO SHREWSBURY - EAST OF WELSHPOOL	8056	672	7	4	8063	675	0.1%	0.6%
8	A483 - BETWEEN A458/A483 AND WELSHPOOL STATION	14442	1099	13	8	14455	1107	0.1%	0.7%
9	A458 - From A483 To B4392 - WELSHPOOL CENTRE	4600	255	13	8	4613	263	0.3%	3.0%
10	A458 - From B4392 To A495	4323	194	0	0	4323	194	0.0%	0.0%
11	A495 - FROM A458 TO A483, NORTH OF WELSHPOOL	3854	226	0	0	3854	226	0.0%	0.0%
12	A458 - FROM A495 TO B4395	4510	161	0	0	4510	161	0.0%	0.0%
13	A458 - FROM B4395 to A470	2625	112	0	0	2625	112	0.0%	0.0%
14	A483 - FROM WELSHPOOL TO NEWTOWN A489	10094	1211	26	15	10120	1227	0.3%	1.3%
15	A483 - FROM A489 TO A483 - NEWTOWN CENTRE	16637	1427	41	24	16678	1451	0.2%	1.7%
16	A489 - FROM A483 TO A470	7905	583	41	24	7947	607	0.5%	4.2%
17	A470 - BETWEEN A489 AND TALERDDIG	3461	413	23	13	3483	426	0.7%	3.0%
18	A470 - BETWEEN TALERDDIG AND CEMMAES	2096	246	1	1	2097	247	0.1%	0.3%
19	A470 - BETWEEN CEMMAES AND A458	2385	144	1	0	2386	145	0.0%	0.2%
21	A470 - FROM A489 TO B4518 LLANIDLOES	6206	506	1	1	6207	507	0.0%	0.1%
22	A489 - BETWEEN A483 NEWTOWN AND KERRY	2527	144	0	0	2527	144	0.0%	0.0%
24	A483 - BETWEEN A483/A489 IN NEWTOWN AND DOLFOR	2341	230	0	0	2341	230	0.0%	0.0%
25	A483 - FROM DOLFOR TO B4356	2730	155	0	0	2730	155	0.0%	0.0%
26	A483 - FROM B4356 TO A44	3046	177	0	0	3046	177	0.0%	0.0%
27	A44 - FROM A483 TO A488 CROSSGATES EAST	3817	222	0	0	3817	222	0.0%	0.0%
28	A44 - FROM A483 TO A470 - CROSSGATES WEST	1829	110	0	0	1829	110	0.0%	0.0%
29	A483 - FROM A44 TO A4081 - LLANDRINDOD WELLS	7349	302	0	0	7349	302	0.0%	0.0%
30	A483 - FROM A4081 TO A470 - LLANDRINDOD WELLS	8121	270	0	0	8121	270	0.0%	0.0%
31	B4392 - From A458 to A483 N of Welshpool	1457	145	0	0	1457	145	0.0%	0.0%
32	A470 - From A458 to Dolgellau	2121	80	1	0	2122	81	0.0%	0.4%
33	A489 - From A470 to Machynlleth	3194	158	1	0	3194	158	0.0%	0.2%

Feb-16

## ALL TRAFFIC IS TWO WAY DAILY FLOWS, ON MONTHLY TIME PERIODS

LINK INFORMATION		BASE NETWORK FLOWS		STMP FLOWS (BASE + DISTRIBUTED)		TOTAL FLOWS		% IMPACT	
LINK	LOCATION	AADT	HGV	AADT	HGV	AADT	HGV	AADT	HGV
1	A483 - FROM A5 TO A539 SOUTH OF WREXHAM	25291	2089	0	0	25291	2089	0.0%	0.0%
2	A5 - FROM A5 CHIRK TO A495 NORTH OF OSWESTRY	25021	2026	0	0	25021	2026	0.0%	0.0%
3	A5 - BETWEEN A483 & A495, EAST OF OSWESTRY	25252	2347	0	0	25252	2347	0.0%	0.0%
4	A5 - EAST OF A483 TOWARDS SHREWSBURY	19182	1288	0	0	19182	1288	0.0%	0.0%
5	A483 - FROM A495 TO A5	12415	1047	0	0	12415	1047	0.0%	0.0%
6	A483 - FROM A458 TO A495	8696	918	7	4	8702	922	0.1%	0.4%
7	A458 - FROM A483 TO SHREWSBURY - EAST OF WELSHPOOL	8056	672	7	4	8063	675	0.1%	0.6%
8	A483 - BETWEEN A458/A483 AND WELSHPOOL STATION	14442	1099	13	8	14455	1107	0.1%	0.7%
9	A458 - From A483 To B4392 - WELSHPOOL CENTRE	4600	255	13	8	4613	263	0.3%	3.0%
10	A458 - From B4392 To A495	4323	194	0	0	4323	194	0.0%	0.0%
11	A495 - FROM A458 TO A483, NORTH OF WELSHPOOL	3854	226	0	0	3854	226	0.0%	0.0%
12	A458 - FROM A495 TO B4395	4510	161	0	0	4510	161	0.0%	0.0%
13	A458 - FROM B4395 to A470	2625	112	0	0	2625	112	0.0%	0.0%
14	A483 - FROM WELSHPOOL TO NEWTOWN A489	10094	1211	26	15	10120	1227	0.3%	1.3%
15	A483 - FROM A489 TO A483 - NEWTOWN CENTRE	16637	1427	41	24	16678	1451	0.2%	1.7%
16	A489 - FROM A483 TO A470	7905	583	41	24	7947	607	0.5%	4.2%
17	A470 - BETWEEN A489 AND TALERDDIG	3461	413	23	13	3483	426	0.7%	3.0%
18	A470 - BETWEEN TALERDDIG AND CEMMAES	2096	246	1	1	2097	247	0.1%	0.3%
19	A470 - BETWEEN CEMMAES AND A458	2385	144	1	0	2386	145	0.0%	0.2%
21	A470 - FROM A489 TO B4518 LLANIDLOES	6206	506	1	1	6207	507	0.0%	0.1%
22	A489 - BETWEEN A483 NEWTOWN AND KERRY	2527	144	0	0	2527	144	0.0%	0.0%
24	A483 - BETWEEN A483/A489 IN NEWTOWN AND DOLFOR	2341	230	0	0	2341	230	0.0%	0.0%
25	A483 - FROM DOLFOR TO B4356	2730	155	0	0	2730	155	0.0%	0.0%
26	A483 - FROM B4356 TO A44	3046	177	0	0	3046	177	0.0%	0.0%
27	A44 - FROM A483 TO A488 CROSSGATES EAST	3817	222	0	0	3817	222	0.0%	0.0%
28	A44 - FROM A483 TO A470 - CROSSGATES WEST	1829	110	0	0	1829	110	0.0%	0.0%
29	A483 - FROM A44 TO A4081 - LLANDRINDOD WELLS	7349	302	0	0	7349	302	0.0%	0.0%
30	A483 - FROM A4081 TO A470 - LLANDRINDOD WELLS	8121	270	0	0	8121	270	0.0%	0.0%
31	B4392 - From A458 to A483 N of Welshpool	1457	145	0	0	1457	145	0.0%	0.0%
32	A470 - From A458 to Dolgellau	2121	80	1	0	2122	81	0.0%	0.4%
33	A489 - From A470 to Machynlleth	3194	158	1	0	3194	158	0.0%	0.2%



Mar-16

## ALL TRAFFIC IS TWO WAY DAILY FLOWS, ON MONTHLY TIME PERIODS

LINK INFORMATION		BASE NETWORK FLOWS		STMP FLOWS (BASE + DISTRIBUTED)		TOTAL FLOWS		% IMPACT	
LINK	LOCATION	AADT	HGV	AADT	HGV	AADT	HGV	AADT	HGV
1	A483 - FROM A5 TO A539 SOUTH OF WREXHAM	25291	2089	0	0	25291	2089	0.0%	0.0%
2	A5 - FROM A5 CHIRK TO A495 NORTH OF OSWESTRY	25021	2026	0	0	25021	2026	0.0%	0.0%
3	A5 - BETWEEN A483 & A495, EAST OF OSWESTRY	25252	2347	0	0	25252	2347	0.0%	0.0%
4	A5 - EAST OF A483 TOWARDS SHREWSBURY	19182	1288	0	0	19182	1288	0.0%	0.0%
5	A483 - FROM A495 TO A5	12415	1047	0	0	12415	1047	0.0%	0.0%
6	A483 - FROM A458 TO A495	8696	918	12	8	8708	926	0.1%	0.9%
7	A458 - FROM A483 TO SHREWSBURY - EAST OF WELSHPOOL	8056	672	12	8	8068	680	0.1%	1.2%
8	A483 - BETWEEN A458/A483 AND WELSHPOOL STATION	14442	1099	24	16	14466	1115	0.2%	1.5%
9	A458 - From A483 To B4392 - WELSHPOOL CENTRE	4600	255	24	16	4624	271	0.5%	6.3%
10	A458 - From B4392 To A495	4323	194	0	0	4323	194	0.0%	0.0%
11	A495 - FROM A458 TO A483, NORTH OF WELSHPOOL	3854	226	0	0	3854	226	0.0%	0.0%
12	A458 - FROM A495 TO B4395	4510	161	0	0	4510	161	0.0%	0.0%
13	A458 - FROM B4395 to A470	2625	112	0	0	2625	112	0.0%	0.0%
14	A483 - FROM WELSHPOOL TO NEWTOWN A489	10094	1211	48	32	10142	1244	0.5%	2.7%
15	A483 - FROM A489 TO A483 - NEWTOWN CENTRE	16637	1427	63	41	16700	1468	0.4%	2.9%
16	A489 - FROM A483 TO A470	7905	583	63	41	7969	624	0.8%	7.1%
17	A470 - BETWEEN A489 AND TALERDDIG	3461	413	67	47	3527	460	1.9%	11.3%
18	A470 - BETWEEN TALERDDIG AND CEMMAES	2096	246	4	3	2100	248	0.2%	1.1%
19	A470 - BETWEEN CEMMAES AND A458	2385	144	2	1	2387	146	0.1%	0.9%
21	A470 - FROM A489 TO B4518 LLANIDLOES	6206	506	4	3	6210	509	0.1%	0.5%
22	A489 - BETWEEN A483 NEWTOWN AND KERRY	2527	144	0	0	2527	144	0.0%	0.0%
24	A483 - BETWEEN A483/A489 IN NEWTOWN AND DOLFOR	2341	230	0	0	2341	230	0.0%	0.0%
25	A483 - FROM DOLFOR TO B4356	2730	155	0	0	2730	155	0.0%	0.0%
26	A483 - FROM B4356 TO A44	3046	177	0	0	3046	177	0.0%	0.0%
27	A44 - FROM A483 TO A488 CROSSGATES EAST	3817	222	0	0	3817	222	0.0%	0.0%
28	A44 - FROM A483 TO A470 - CROSSGATES WEST	1829	110	0	0	1829	110	0.0%	0.0%
29	A483 - FROM A44 TO A4081 - LLANDRINDOD WELLS	7349	302	0	0	7349	302	0.0%	0.0%
30	A483 - FROM A4081 TO A470 - LLANDRINDOD WELLS	8121	270	0	0	8121	270	0.0%	0.0%
31	B4392 - From A458 to A483 N of Welshpool	1457	145	0	0	1457	145	0.0%	0.0%
32	A470 - From A458 to Dolgellau	2121	80	2	1	2123	82	0.1%	1.6%
33	A489 - From A470 to Machynlleth	3194	158	2	1	3196	159	0.1%	0.8%

Apr-16

## ALL TRAFFIC IS TWO WAY DAILY FLOWS, ON MONTHLY TIME PERIODS

LINK INFORMATION		BASE NETWORK FLOWS		STMP FLOWS (BASE + DISTRIBUTED)		TOTAL FLOWS		% IMPACT	
LINK	LOCATION	AADT	HGV	AADT	HGV	AADT	HGV	AADT	HGV
1	A483 - FROM A5 TO A539 SOUTH OF WREXHAM	25291	2089	0	0	25291	2089	0.0%	0.0%
2	A5 - FROM A5 CHIRK TO A495 NORTH OF OSWESTRY	25021	2026	0	0	25021	2026	0.0%	0.0%
3	A5 - BETWEEN A483 & A495, EAST OF OSWESTRY	25252	2347	0	0	25252	2347	0.0%	0.0%
4	A5 - EAST OF A483 TOWARDS SHREWSBURY	19182	1288	0	0	19182	1288	0.0%	0.0%
5	A483 - FROM A495 TO A5	12415	1047	0	0	12415	1047	0.0%	0.0%
6	A483 - FROM A458 TO A495	8696	918	16	12	8712	930	0.2%	1.3%
7	A458 - FROM A483 TO SHREWSBURY - EAST OF WELSHPOOL	8056	672	16	12	8072	684	0.2%	1.8%
8	A483 - BETWEEN A458/A483 AND WELSHPOOL STATION	14442	1099	28	23	14470	1122	0.2%	2.1%
9	A458 - From A483 To B4392 - WELSHPOOL CENTRE	4600	255	30	24	4630	279	0.6%	9.3%
10	A458 - From B4392 To A495	4323	194	0	0	4323	194	0.0%	0.0%
11	A495 - FROM A458 TO A483, NORTH OF WELSHPOOL	3854	226	0	0	3854	226	0.0%	0.0%
12	A458 - FROM A495 TO B4395	4510	161	0	0	4510	161	0.0%	0.0%
13	A458 - FROM B4395 to A470	2625	112	0	0	2625	112	0.0%	0.0%
14	A483 - FROM WELSHPOOL TO NEWTOWN A489	10094	1211	61	48	10155	1260	0.6%	4.0%
15	A483 - FROM A489 TO A483 - NEWTOWN CENTRE	16637	1427	55	45	16692	1472	0.3%	3.2%
16	A489 - FROM A483 TO A470	7905	583	59	47	7964	630	0.7%	8.1%
17	A470 - BETWEEN A489 AND TALERDDIG	3461	413	111	91	3571	504	3.2%	22.0%
18	A470 - BETWEEN TALERDDIG AND CEMMAES	2096	246	6	5	2102	251	0.3%	2.1%
19	A470 - BETWEEN CEMMAES AND A458	2385	144	3	3	2388	147	0.1%	1.7%
21	A470 - FROM A489 TO B4518 LLANIDLOES	6206	506	6	5	6212	511	0.1%	1.0%
22	A489 - BETWEEN A483 NEWTOWN AND KERRY	2527	144	10	5	2537	149	0.4%	3.5%
24	A483 - BETWEEN A483/A489 IN NEWTOWN AND DOLFOR	2341	230	5	3	2346	233	0.2%	1.1%
25	A483 - FROM DOLFOR TO B4356	2730	155	25	13	2755	167	0.9%	8.1%
26	A483 - FROM B4356 TO A44	3046	177	5	3	3051	179	0.2%	1.4%
27	A44 - FROM A483 TO A488 CROSSGATES EAST	3817	222	2	1	3819	223	0.0%	0.4%
28	A44 - FROM A483 TO A470 - CROSSGATES WEST	1829	110	2	1	1830	111	0.1%	0.7%
29	A483 - FROM A44 TO A4081 - LLANDRINDOD WELLS	7349	302	2	1	7350	303	0.0%	0.3%
30	A483 - FROM A4081 TO A470 - LLANDRINDOD WELLS	8121	270	0	0	8121	270	0.0%	0.0%
31	B4392 - From A458 to A483 N of Welshpool	1457	145	0	0	1457	145	0.0%	0.0%
32	A470 - From A458 to Dolgellau	2121	80	3	3	2124	83	0.1%	3.1%
33	A489 - From A470 to Machynlleth	3194	158	3	3	3197	160	0.1%	1.6%

May-16

## ALL TRAFFIC IS TWO WAY DAILY FLOWS, ON MONTHLY TIME PERIODS

LINK INFORMATION		BASE NETWORK FLOWS		STMP FLOWS (BASE + DISTRIBUTED)		TOTAL FLOWS		% IMPACT	
LINK	LOCATION	AADT	HGV	AADT	HGV	AADT	HGV	AADT	HGV
1	A483 - FROM A5 TO A539 SOUTH OF WREXHAM	25291	2089	0	0	25291	2089	0.0%	0.0%
2	A5 - FROM A5 CHIRK TO A495 NORTH OF OSWESTRY	25021	2026	0	0	25021	2026	0.0%	0.0%
3	A5 - BETWEEN A483 & A495, EAST OF OSWESTRY	25252	2347	0	0	25252	2347	0.0%	0.0%
4	A5 - EAST OF A483 TOWARDS SHREWSBURY	19182	1288	0	0	19182	1288	0.0%	0.0%
5	A483 - FROM A495 TO A5	12415	1047	0	0	12415	1047	0.0%	0.0%
6	A483 - FROM A458 TO A495	8696	918	13	10	8709	927	0.1%	1.0%
7	A458 - FROM A483 TO SHREWSBURY - EAST OF WELSHPOOL	8056	672	13	10	8069	681	0.2%	1.4%
8	A483 - BETWEEN A458/A483 AND WELSHPOOL STATION	14442	1099	22	17	14464	1116	0.2%	1.6%
9	A458 - From A483 To B4392 - WELSHPOOL CENTRE	4600	255	24	18	4624	273	0.5%	7.1%
10	A458 - From B4392 To A495	4323	194	0	0	4323	194	0.0%	0.0%
11	A495 - FROM A458 TO A483, NORTH OF WELSHPOOL	3854	226	0	0	3854	226	0.0%	0.0%
12	A458 - FROM A495 TO B4395	4510	161	0	0	4510	161	0.0%	0.0%
13	A458 - FROM B4395 to A470	2625	112	0	0	2625	112	0.0%	0.0%
14	A483 - FROM WELSHPOOL TO NEWTOWN A489	10094	1211	50	37	10144	1249	0.5%	3.1%
15	A483 - FROM A489 TO A483 - NEWTOWN CENTRE	16637	1427	44	34	16681	1461	0.3%	2.4%
16	A489 - FROM A483 TO A470	7905	583	48	36	7953	619	0.6%	6.2%
17	A470 - BETWEEN A489 AND TALERDDIG	3461	413	88	68	3549	482	2.5%	16.5%
18	A470 - BETWEEN TALERDDIG AND CEMMAES	2096	246	5	4	2101	250	0.2%	1.5%
19	A470 - BETWEEN CEMMAES AND A458	2385	144	2	2	2388	146	0.1%	1.3%
21	A470 - FROM A489 TO B4518 LLANIDLOES	6206	506	5	4	6211	510	0.1%	0.8%
22	A489 - BETWEEN A483 NEWTOWN AND KERRY	2527	144	10	5	2537	149	0.4%	3.5%
24	A483 - BETWEEN A483/A489 IN NEWTOWN AND DOLFOR	2341	230	5	3	2346	233	0.2%	1.1%
25	A483 - FROM DOLFOR TO B4356	2730	155	25	13	2755	167	0.9%	8.1%
26	A483 - FROM B4356 TO A44	3046	177	5	3	3051	179	0.2%	1.4%
27	A44 - FROM A483 TO A488 CROSSGATES EAST	3817	222	2	1	3819	223	0.0%	0.4%
28	A44 - FROM A483 TO A470 - CROSSGATES WEST	1829	110	2	1	1830	111	0.1%	0.7%
29	A483 - FROM A44 TO A4081 - LLANDRINDOD WELLS	7349	302	2	1	7350	303	0.0%	0.3%
30	A483 - FROM A4081 TO A470 - LLANDRINDOD WELLS	8121	270	0	0	8121	270	0.0%	0.0%
31	B4392 - From A458 to A483 N of Welshpool	1457	145	0	0	1457	145	0.0%	0.0%
32	A470 - From A458 to Dolgellau	2121	80	2	2	2124	82	0.1%	2.4%
33	A489 - From A470 to Machynlleth	3194	158	2	2	3196	159	0.1%	1.2%

Jun-16

## ALL TRAFFIC IS TWO WAY DAILY FLOWS, ON MONTHLY TIME PERIODS

LINK INFORMATION		BASE NETWORK FLOWS		STMP FLOWS (BASE + DISTRIBUTED)		TOTAL FLOWS		% IMPACT	
LINK	LOCATION	AADT	HGV	AADT	HGV	AADT	HGV	AADT	HGV
1	A483 - FROM A5 TO A539 SOUTH OF WREXHAM	25291	2089	0	0	25291	2089	0.0%	0.0%
2	A5 - FROM A5 CHIRK TO A495 NORTH OF OSWESTRY	25021	2026	0	0	25021	2026	0.0%	0.0%
3	A5 - BETWEEN A483 & A495, EAST OF OSWESTRY	25252	2347	0	0	25252	2347	0.0%	0.0%
4	A5 - EAST OF A483 TOWARDS SHREWSBURY	19182	1288	0	0	19182	1288	0.0%	0.0%
5	A483 - FROM A495 TO A5	12415	1047	0	0	12415	1047	0.0%	0.0%
6	A483 - FROM A458 TO A495	8696	918	6	3	8702	921	0.1%	0.3%
7	A458 - FROM A483 TO SHREWSBURY - EAST OF WELSHPOOL	8056	672	6	3	8063	675	0.1%	0.4%
8	A483 - BETWEEN A458/A483 AND WELSHPOOL STATION	14442	1099	9	4	14451	1103	0.1%	0.3%
9	A458 - From A483 To B4392 - WELSHPOOL CENTRE	4600	255	11	5	4611	260	0.2%	1.9%
10	A458 - From B4392 To A495	4323	194	0	0	4323	194	0.0%	0.0%
11	A495 - FROM A458 TO A483, NORTH OF WELSHPOOL	3854	226	0	0	3854	226	0.0%	0.0%
12	A458 - FROM A495 TO B4395	4510	161	0	0	4510	161	0.0%	0.0%
13	A458 - FROM B4395 to A470	2625	112	0	0	2625	112	0.0%	0.0%
14	A483 - FROM WELSHPOOL TO NEWTOWN A489	10094	1211	24	11	10117	1222	0.2%	0.9%
15	A483 - FROM A489 TO A483 - NEWTOWN CENTRE	16637	1427	18	8	16654	1435	0.1%	0.5%
16	A489 - FROM A483 TO A470	7905	583	21	10	7927	592	0.3%	1.6%
17	A470 - BETWEEN A489 AND TALERDDIG	3461	413	35	15	3496	429	1.0%	3.7%
18	A470 - BETWEEN TALERDDIG AND CEMMAES	2096	246	2	1	2098	247	0.1%	0.3%
19	A470 - BETWEEN CEMMAES AND A458	2385	144	1	0	2386	145	0.0%	0.3%
21	A470 - FROM A489 TO B4518 LLANIDLOES	6206	506	2	1	6208	507	0.0%	0.2%
22	A489 - BETWEEN A483 NEWTOWN AND KERRY	2527	144	10	5	2537	149	0.4%	3.5%
24	A483 - BETWEEN A483/A489 IN NEWTOWN AND DOLFOR	2341	230	5	3	2346	233	0.2%	1.1%
25	A483 - FROM DOLFOR TO B4356	2730	155	25	13	2755	167	0.9%	8.1%
26	A483 - FROM B4356 TO A44	3046	177	5	3	3051	179	0.2%	1.4%
27	A44 - FROM A483 TO A488 CROSSGATES EAST	3817	222	2	1	3819	223	0.0%	0.4%
28	A44 - FROM A483 TO A470 - CROSSGATES WEST	1829	110	2	1	1830	111	0.1%	0.7%
29	A483 - FROM A44 TO A4081 - LLANDRINDOD WELLS	7349	302	2	1	7350	303	0.0%	0.3%
30	A483 - FROM A4081 TO A470 - LLANDRINDOD WELLS	8121	270	0	0	8121	270	0.0%	0.0%
31	B4392 - From A458 to A483 N of Welshpool	1457	145	0	0	1457	145	0.0%	0.0%
32	A470 - From A458 to Dolgellau	2121	80	1	0	2122	81	0.0%	0.5%
33	A489 - From A470 to Machynlleth	3194	158	1	0	3195	158	0.0%	0.3%

Jul-16

## ALL TRAFFIC IS TWO WAY DAILY FLOWS, ON MONTHLY TIME PERIODS

LINK INFORMATION		BASE NETWORK FLOWS		STMP FLOWS (BASE + DISTRIBUTED)		TOTAL FLOWS		% IMPACT	
LINK	LOCATION	AADT	HGV	AADT	HGV	AADT	HGV	AADT	HGV
1	A483 - FROM A5 TO A539 SOUTH OF WREXHAM	25291	2089	0	0	25291	2089	0.0%	0.0%
2	A5 - FROM A5 CHIRK TO A495 NORTH OF OSWESTRY	25021	2026	0	0	25021	2026	0.0%	0.0%
3	A5 - BETWEEN A483 & A495, EAST OF OSWESTRY	25252	2347	0	0	25252	2347	0.0%	0.0%
4	A5 - EAST OF A483 TOWARDS SHREWSBURY	19182	1288	0	0	19182	1288	0.0%	0.0%
5	A483 - FROM A495 TO A5	12415	1047	0	0	12415	1047	0.0%	0.0%
6	A483 - FROM A458 TO A495	8696	918	7	3	8703	921	0.1%	0.4%
7	A458 - FROM A483 TO SHREWSBURY - EAST OF WELSHPOOL	8056	672	7	3	8063	675	0.1%	0.5%
8	A483 - BETWEEN A458/A483 AND WELSHPOOL STATION	14442	1099	10	5	14452	1104	0.1%	0.5%
9	A458 - From A483 To B4392 - WELSHPOOL CENTRE	4600	255	12	6	4612	261	0.3%	2.3%
10	A458 - From B4392 To A495	4323	194	0	0	4323	194	0.0%	0.0%
11	A495 - FROM A458 TO A483, NORTH OF WELSHPOOL	3854	226	0	0	3854	226	0.0%	0.0%
12	A458 - FROM A495 TO B4395	4510	161	0	0	4510	161	0.0%	0.0%
13	A458 - FROM B4395 to A470	2625	112	0	0	2625	112	0.0%	0.0%
14	A483 - FROM WELSHPOOL TO NEWTOWN A489	10094	1211	26	13	10120	1224	0.3%	1.1%
15	A483 - FROM A489 TO A483 - NEWTOWN CENTRE	16637	1427	20	10	16657	1437	0.1%	0.7%
16	A489 - FROM A483 TO A470	7905	583	24	12	7929	595	0.3%	2.0%
17	A470 - BETWEEN A489 AND TALERDDIG	3461	413	40	20	3500	433	1.1%	4.8%
18	A470 - BETWEEN TALERDDIG AND CEMMAES	2096	246	2	1	2098	247	0.1%	0.4%
19	A470 - BETWEEN CEMMAES AND A458	2385	144	1	1	2386	145	0.0%	0.4%
21	A470 - FROM A489 TO B4518 LLANIDLOES	6206	506	2	1	6208	507	0.0%	0.2%
22	A489 - BETWEEN A483 NEWTOWN AND KERRY	2527	144	10	5	2537	149	0.4%	3.5%
24	A483 - BETWEEN A483/A489 IN NEWTOWN AND DOLFOR	2341	230	5	3	2346	233	0.2%	1.1%
25	A483 - FROM DOLFOR TO B4356	2730	155	25	13	2755	167	0.9%	8.1%
26	A483 - FROM B4356 TO A44	3046	177	5	3	3051	179	0.2%	1.4%
27	A44 - FROM A483 TO A488 CROSSGATES EAST	3817	222	2	1	3819	223	0.0%	0.4%
28	A44 - FROM A483 TO A470 - CROSSGATES WEST	1829	110	2	1	1830	111	0.1%	0.7%
29	A483 - FROM A44 TO A4081 - LLANDRINDOD WELLS	7349	302	2	1	7350	303	0.0%	0.3%
30	A483 - FROM A4081 TO A470 - LLANDRINDOD WELLS	8121	270	0	0	8121	270	0.0%	0.0%
31	B4392 - From A458 to A483 N of Welshpool	1457	145	0	0	1457	145	0.0%	0.0%
32	A470 - From A458 to Dolgellau	2121	80	1	1	2122	81	0.1%	0.7%
33	A489 - From A470 to Machynlleth	3194	158	1	1	3195	158	0.0%	0.3%

Aug-16

## ALL TRAFFIC IS TWO WAY DAILY FLOWS, ON MONTHLY TIME PERIODS

LINK INFORMATION		BASE NETWORK FLOWS		STMP FLOWS (BASE + DISTRIBUTED)		TOTAL FLOWS		% IMPACT	
LINK	LOCATION	AADT	HGV	AADT	HGV	AADT	HGV	AADT	HGV
1	A483 - FROM A5 TO A539 SOUTH OF WREXHAM	25291	2089	0	0	25291	2089	0.0%	0.0%
2	A5 - FROM A5 CHIRK TO A495 NORTH OF OSWESTRY	25021	2026	0	0	25021	2026	0.0%	0.0%
3	A5 - BETWEEN A483 & A495, EAST OF OSWESTRY	25252	2347	0	0	25252	2347	0.0%	0.0%
4	A5 - EAST OF A483 TOWARDS SHREWSBURY	19182	1288	0	0	19182	1288	0.0%	0.0%
5	A483 - FROM A495 TO A5	12415	1047	0	0	12415	1047	0.0%	0.0%
6	A483 - FROM A458 TO A495	8696	918	7	3	8703	921	0.1%	0.4%
7	A458 - FROM A483 TO SHREWSBURY - EAST OF WELSHPOOL	8056	672	7	3	8063	675	0.1%	0.5%
8	A483 - BETWEEN A458/A483 AND WELSHPOOL STATION	14442	1099	10	5	14452	1104	0.1%	0.5%
9	A458 - From A483 To B4392 - WELSHPOOL CENTRE	4600	255	12	6	4612	261	0.3%	2.3%
10	A458 - From B4392 To A495	4323	194	0	0	4323	194	0.0%	0.0%
11	A495 - FROM A458 TO A483, NORTH OF WELSHPOOL	3854	226	0	0	3854	226	0.0%	0.0%
12	A458 - FROM A495 TO B4395	4510	161	0	0	4510	161	0.0%	0.0%
13	A458 - FROM B4395 to A470	2625	112	0	0	2625	112	0.0%	0.0%
14	A483 - FROM WELSHPOOL TO NEWTOWN A489	10094	1211	26	13	10120	1224	0.3%	1.1%
15	A483 - FROM A489 TO A483 - NEWTOWN CENTRE	16637	1427	20	10	16657	1437	0.1%	0.7%
16	A489 - FROM A483 TO A470	7905	583	24	12	7929	595	0.3%	2.0%
17	A470 - BETWEEN A489 AND TALERDDIG	3461	413	40	20	3500	433	1.1%	4.8%
18	A470 - BETWEEN TALERDDIG AND CEMMAES	2096	246	2	1	2098	247	0.1%	0.4%
19	A470 - BETWEEN CEMMAES AND A458	2385	144	1	1	2386	145	0.0%	0.4%
21	A470 - FROM A489 TO B4518 LLANIDLOES	6206	506	2	1	6208	507	0.0%	0.2%
22	A489 - BETWEEN A483 NEWTOWN AND KERRY	2527	144	10	5	2537	149	0.4%	3.5%
24	A483 - BETWEEN A483/A489 IN NEWTOWN AND DOLFOR	2341	230	5	3	2346	233	0.2%	1.1%
25	A483 - FROM DOLFOR TO B4356	2730	155	25	13	2755	167	0.9%	8.1%
26	A483 - FROM B4356 TO A44	3046	177	5	3	3051	179	0.2%	1.4%
27	A44 - FROM A483 TO A488 CROSSGATES EAST	3817	222	2	1	3819	223	0.0%	0.4%
28	A44 - FROM A483 TO A470 - CROSSGATES WEST	1829	110	2	1	1830	111	0.1%	0.7%
29	A483 - FROM A44 TO A4081 - LLANDRINDOD WELLS	7349	302	2	1	7350	303	0.0%	0.3%
30	A483 - FROM A4081 TO A470 - LLANDRINDOD WELLS	8121	270	0	0	8121	270	0.0%	0.0%
31	B4392 - From A458 to A483 N of Welshpool	1457	145	0	0	1457	145	0.0%	0.0%
32	A470 - From A458 to Dolgellau	2121	80	1	1	2122	81	0.1%	0.7%
33	A489 - From A470 to Machynlleth	3194	158	1	1	3195	158	0.0%	0.3%

Sep-16

ALL TRAFFIC IS TWO WAY DAILY FLOWS, ON MONTHLY TIME PERIODS

LINK INFORMATION		BASE NETWORK FLOWS		STMP FLOWS (BASE + DISTRIBUTED)		TOTAL FLOWS		% IMPACT	
LINK	LOCATION	AADT	HGV	AADT	HGV	AADT	HGV	AADT	HGV
1	A483 - FROM A5 TO A539 SOUTH OF WREXHAM	25291	2089	0	0	25291	2089	0.0%	0.0%
2	A5 - FROM A5 CHIRK TO A495 NORTH OF OSWESTRY	25021	2026	0	0	25021	2026	0.0%	0.0%
3	A5 - BETWEEN A483 & A495, EAST OF OSWESTRY	25252	2347	0	0	25252	2347	0.0%	0.0%
4	A5 - EAST OF A483 TOWARDS SHREWSBURY	19182	1288	0	0	19182	1288	0.0%	0.0%
5	A483 - FROM A495 TO A5	12415	1047	0	0	12415	1047	0.0%	0.0%
6	A483 - FROM A458 TO A495	8696	918	11	7	8706	925	0.1%	0.8%
7	A458 - FROM A483 TO SHREWSBURY - EAST OF WELSHPOOL	8056	672	11	7	8067	679	0.1%	1.1%
8	A483 - BETWEEN A458/A483 AND WELSHPOOL STATION	14442	1099	17	12	14459	1111	0.1%	1.1%
9	A458 - From A483 To B4392 - WELSHPOOL CENTRE	4600	255	19	13	4619	268	0.4%	5.1%
10	A458 - From B4392 To A495	4323	194	0	0	4323	194	0.0%	0.0%
11	A495 - FROM A458 TO A483, NORTH OF WELSHPOOL	3854	226	0	0	3854	226	0.0%	0.0%
12	A458 - FROM A495 TO B4395	4510	161	0	0	4510	161	0.0%	0.0%
13	A458 - FROM B4395 to A470	2625	112	0	0	2625	112	0.0%	0.0%
14	A483 - FROM WELSHPOOL TO NEWTOWN A489	10094	1211	40	27	10134	1239	0.4%	2.3%
15	A483 - FROM A489 TO A483 - NEWTOWN CENTRE	16637	1427	34	24	16671	1451	0.2%	1.7%
16	A489 - FROM A483 TO A470	7905	583	38	26	7943	609	0.5%	4.5%
17	A470 - BETWEEN A489 AND TALERDDIG	3461	413	68	49	3529	462	2.0%	11.8%
18	A470 - BETWEEN TALERDDIG AND CEMMAES	2096	246	4	3	2100	249	0.2%	1.1%
19	A470 - BETWEEN CEMMAES AND A458	2385	144	2	1	2387	146	0.1%	0.9%
21	A470 - FROM A489 TO B4518 LLANIDLOES	6206	506	4	3	6210	509	0.1%	0.5%
22	A489 - BETWEEN A483 NEWTOWN AND KERRY	2527	144	10	5	2537	149	0.4%	3.5%
24	A483 - BETWEEN A483/A489 IN NEWTOWN AND DOLFOR	2341	230	5	3	2346	233	0.2%	1.1%
25	A483 - FROM DOLFOR TO B4356	2730	155	25	13	2755	167	0.9%	8.1%
26	A483 - FROM B4356 TO A44	3046	177	5	3	3051	179	0.2%	1.4%
27	A44 - FROM A483 TO A488 CROSSGATES EAST	3817	222	2	1	3819	223	0.0%	0.4%
28	A44 - FROM A483 TO A470 - CROSSGATES WEST	1829	110	2	1	1830	111	0.1%	0.7%
29	A483 - FROM A44 TO A4081 - LLANDRINDOD WELLS	7349	302	2	1	7350	303	0.0%	0.3%
30	A483 - FROM A4081 TO A470 - LLANDRINDOD WELLS	8121	270	0	0	8121	270	0.0%	0.0%
31	B4392 - From A458 to A483 N of Welshpool	1457	145	0	0	1457	145	0.0%	0.0%
32	A470 - From A458 to Dolgellau	2121	80	2	1	2123	82	0.1%	1.7%
33	A489 - From A470 to Machynlleth	3194	158	2	1	3196	159	0.1%	0.9%

Oct-16

## ALL TRAFFIC IS TWO WAY DAILY FLOWS, ON MONTHLY TIME PERIODS

LINK INFORMATION		BASE NETWORK FLOWS		STMP FLOWS (BASE + DISTRIBUTED)		TOTAL FLOWS		% IMPACT	
LINK	LOCATION	AADT	HGV	AADT	HGV	AADT	HGV	AADT	HGV
1	A483 - FROM A5 TO A539 SOUTH OF WREXHAM	25291	2089	0	0	25291	2089	0.0%	0.0%
2	A5 - FROM A5 CHIRK TO A495 NORTH OF OSWESTRY	25021	2026	0	0	25021	2026	0.0%	0.0%
3	A5 - BETWEEN A483 & A495, EAST OF OSWESTRY	25252	2347	0	0	25252	2347	0.0%	0.0%
4	A5 - EAST OF A483 TOWARDS SHREWSBURY	19182	1288	0	0	19182	1288	0.0%	0.0%
5	A483 - FROM A495 TO A5	12415	1047	0	0	12415	1047	0.0%	0.0%
6	A483 - FROM A458 TO A495	8696	918	9	5	8704	923	0.1%	0.5%
7	A458 - FROM A483 TO SHREWSBURY - EAST OF WELSHPOOL	8056	672	9	5	8065	677	0.1%	0.8%
8	A483 - BETWEEN A458/A483 AND WELSHPOOL STATION	14442	1099	13	8	14455	1107	0.1%	0.7%
9	A458 - From A483 To B4392 - WELSHPOOL CENTRE	4600	255	15	9	4615	264	0.3%	3.6%
10	A458 - From B4392 To A495	4323	194	0	0	4323	194	0.0%	0.0%
11	A495 - FROM A458 TO A483, NORTH OF WELSHPOOL	3854	226	0	0	3854	226	0.0%	0.0%
12	A458 - FROM A495 TO B4395	4510	161	0	0	4510	161	0.0%	0.0%
13	A458 - FROM B4395 to A470	2625	112	0	0	2625	112	0.0%	0.0%
14	A483 - FROM WELSHPOOL TO NEWTOWN A489	10094	1211	32	19	10126	1231	0.3%	1.6%
15	A483 - FROM A489 TO A483 - NEWTOWN CENTRE	16637	1427	26	16	16663	1443	0.2%	1.1%
16	A489 - FROM A483 TO A470	7905	583	30	18	7935	601	0.4%	3.1%
17	A470 - BETWEEN A489 AND TALERDDIG	3461	413	52	32	3513	446	1.5%	7.8%
18	A470 - BETWEEN TALERDDIG AND CEMMAES	2096	246	3	2	2099	248	0.1%	0.7%
19	A470 - BETWEEN CEMMAES AND A458	2385	144	1	1	2387	145	0.1%	0.6%
21	A470 - FROM A489 TO B4518 LLANIDLOES	6206	506	3	2	6209	508	0.0%	0.4%
22	A489 - BETWEEN A483 NEWTOWN AND KERRY	2527	144	10	5	2537	149	0.4%	3.5%
24	A483 - BETWEEN A483/A489 IN NEWTOWN AND DOLFOR	2341	230	5	3	2346	233	0.2%	1.1%
25	A483 - FROM DOLFOR TO B4356	2730	155	25	13	2755	167	0.9%	8.1%
26	A483 - FROM B4356 TO A44	3046	177	5	3	3051	179	0.2%	1.4%
27	A44 - FROM A483 TO A488 CROSSGATES EAST	3817	222	2	1	3819	223	0.0%	0.4%
28	A44 - FROM A483 TO A470 - CROSSGATES WEST	1829	110	2	1	1830	111	0.1%	0.7%
29	A483 - FROM A44 TO A4081 - LLANDRINDOD WELLS	7349	302	2	1	7350	303	0.0%	0.3%
30	A483 - FROM A4081 TO A470 - LLANDRINDOD WELLS	8121	270	0	0	8121	270	0.0%	0.0%
31	B4392 - From A458 to A483 N of Welshpool	1457	145	0	0	1457	145	0.0%	0.0%
32	A470 - From A458 to Dolgellau	2121	80	1	1	2123	81	0.1%	1.1%
33	A489 - From A470 to Machynlleth	3194	158	1	1	3195	158	0.0%	0.6%



Nov-16

## ALL TRAFFIC IS TWO WAY DAILY FLOWS, ON MONTHLY TIME PERIODS

LINK INFORMATION		BASE NETWORK FLOWS		STMP FLOWS (BASE + DISTRIBUTED)		TOTAL FLOWS		% IMPACT	
LINK	LOCATION	AADT	HGV	AADT	HGV	AADT	HGV	AADT	HGV
1	A483 - FROM A5 TO A539 SOUTH OF WREXHAM	25291	2089	0	0	25291	2089	0.0%	0.0%
2	A5 - FROM A5 CHIRK TO A495 NORTH OF OSWESTRY	25021	2026	0	0	25021	2026	0.0%	0.0%
3	A5 - BETWEEN A483 & A495, EAST OF OSWESTRY	25252	2347	0	0	25252	2347	0.0%	0.0%
4	A5 - EAST OF A483 TOWARDS SHREWSBURY	19182	1288	0	0	19182	1288	0.0%	0.0%
5	A483 - FROM A495 TO A5	12415	1047	0	0	12415	1047	0.0%	0.0%
6	A483 - FROM A458 TO A495	8696	918	11	7	8706	925	0.1%	0.8%
7	A458 - FROM A483 TO SHREWSBURY - EAST OF WELSHPOOL	8056	672	11	7	8067	679	0.1%	1.1%
8	A483 - BETWEEN A458/A483 AND WELSHPOOL STATION	14442	1099	17	12	14459	1111	0.1%	1.1%
9	A458 - From A483 To B4392 - WELSHPOOL CENTRE	4600	255	19	13	4619	269	0.4%	5.2%
10	A458 - From B4392 To A495	4323	194	0	0	4323	194	0.0%	0.0%
11	A495 - FROM A458 TO A483, NORTH OF WELSHPOOL	3854	226	0	0	3854	226	0.0%	0.0%
12	A458 - FROM A495 TO B4395	4510	161	0	0	4510	161	0.0%	0.0%
13	A458 - FROM B4395 to A470	2625	112	0	0	2625	112	0.0%	0.0%
14	A483 - FROM WELSHPOOL TO NEWTOWN A489	10094	1211	41	28	10134	1239	0.4%	2.3%
15	A483 - FROM A489 TO A483 - NEWTOWN CENTRE	16637	1427	35	25	16671	1452	0.2%	1.7%
16	A489 - FROM A483 TO A470	7905	583	38	27	7944	610	0.5%	4.6%
17	A470 - BETWEEN A489 AND TALERDDIG	3461	413	69	50	3530	463	2.0%	12.0%
18	A470 - BETWEEN TALERDDIG AND CEMMAES	2096	246	4	3	2100	249	0.2%	1.1%
19	A470 - BETWEEN CEMMAES AND A458	2385	144	2	1	2387	146	0.1%	1.0%
21	A470 - FROM A489 TO B4518 LLANIDLOES	6206	506	4	3	6210	509	0.1%	0.5%
22	A489 - BETWEEN A483 NEWTOWN AND KERRY	2527	144	10	5	2537	149	0.4%	3.5%
24	A483 - BETWEEN A483/A489 IN NEWTOWN AND DOLFOR	2341	230	5	3	2346	233	0.2%	1.1%
25	A483 - FROM DOLFOR TO B4356	2730	155	25	13	2755	167	0.9%	8.1%
26	A483 - FROM B4356 TO A44	3046	177	5	3	3051	179	0.2%	1.4%
27	A44 - FROM A483 TO A488 CROSSGATES EAST	3817	222	2	1	3819	223	0.0%	0.4%
28	A44 - FROM A483 TO A470 - CROSSGATES WEST	1829	110	2	1	1830	111	0.1%	0.7%
29	A483 - FROM A44 TO A4081 - LLANDRINDOD WELLS	7349	302	2	1	7350	303	0.0%	0.3%
30	A483 - FROM A4081 TO A470 - LLANDRINDOD WELLS	8121	270	0	0	8121	270	0.0%	0.0%
31	B4392 - From A458 to A483 N of Welshpool	1457	145	0	0	1457	145	0.0%	0.0%
32	A470 - From A458 to Dolgellau	2121	80	2	1	2123	82	0.1%	1.7%
33	A489 - From A470 to Machynlleth	3194	158	2	1	3196	159	0.1%	0.9%

Dec-16

## ALL TRAFFIC IS TWO WAY DAILY FLOWS, ON MONTHLY TIME PERIODS

LINK INFORMATION		BASE NETWORK FLOWS		STMP FLOWS (BASE + DISTRIBUTED)		TOTAL FLOWS		% IMPACT	
LINK	LOCATION	AADT	HGV	AADT	HGV	AADT	HGV	AADT	HGV
1	A483 - FROM A5 TO A539 SOUTH OF WREXHAM	25291	2089	0	0	25291	2089	0.0%	0.0%
2	A5 - FROM A5 CHIRK TO A495 NORTH OF OSWESTRY	25021	2026	0	0	25021	2026	0.0%	0.0%
3	A5 - BETWEEN A483 & A495, EAST OF OSWESTRY	25252	2347	0	0	25252	2347	0.0%	0.0%
4	A5 - EAST OF A483 TOWARDS SHREWSBURY	19182	1288	0	0	19182	1288	0.0%	0.0%
5	A483 - FROM A495 TO A5	12415	1047	0	0	12415	1047	0.0%	0.0%
6	A483 - FROM A458 TO A495	8696	918	11	9	8707	927	0.1%	1.0%
7	A458 - FROM A483 TO SHREWSBURY - EAST OF WELSHPOOL	8056	672	11	9	8068	680	0.1%	1.3%
8	A483 - BETWEEN A458/A483 AND WELSHPOOL STATION	14442	1099	23	18	14465	1117	0.2%	1.6%
9	A458 - From A483 To B4392 - WELSHPOOL CENTRE	4600	255	23	18	4623	273	0.5%	7.0%
10	A458 - From B4392 To A495	4323	194	0	0	4323	194	0.0%	0.0%
11	A495 - FROM A458 TO A483, NORTH OF WELSHPOOL	3854	226	0	0	3854	226	0.0%	0.0%
12	A458 - FROM A495 TO B4395	4510	161	0	0	4510	161	0.0%	0.0%
13	A458 - FROM B4395 to A470	2625	112	0	0	2625	112	0.0%	0.0%
14	A483 - FROM WELSHPOOL TO NEWTOWN A489	10094	1211	45	36	10139	1247	0.5%	2.9%
15	A483 - FROM A489 TO A483 - NEWTOWN CENTRE	16637	1427	45	36	16682	1462	0.3%	2.5%
16	A489 - FROM A483 TO A470	7905	583	45	36	7951	618	0.6%	6.1%
17	A470 - BETWEEN A489 AND TALERDDIG	3461	413	91	71	3552	485	2.6%	17.2%
18	A470 - BETWEEN TALERDDIG AND CEMMAES	2096	246	5	4	2101	250	0.2%	1.6%
19	A470 - BETWEEN CEMMAES AND A458	2385	144	3	2	2388	146	0.1%	1.4%
21	A470 - FROM A489 TO B4518 LLANIDLOES	6206	506	5	4	6211	510	0.1%	0.8%
22	A489 - BETWEEN A483 NEWTOWN AND KERRY	2527	144	0	0	2527	144	0.0%	0.0%
24	A483 - BETWEEN A483/A489 IN NEWTOWN AND DOLFOR	2341	230	0	0	2341	230	0.0%	0.0%
25	A483 - FROM DOLFOR TO B4356	2730	155	0	0	2730	155	0.0%	0.0%
26	A483 - FROM B4356 TO A44	3046	177	0	0	3046	177	0.0%	0.0%
27	A44 - FROM A483 TO A488 CROSSGATES EAST	3817	222	0	0	3817	222	0.0%	0.0%
28	A44 - FROM A483 TO A470 - CROSSGATES WEST	1829	110	0	0	1829	110	0.0%	0.0%
29	A483 - FROM A44 TO A4081 - LLANDRINDOD WELLS	7349	302	0	0	7349	302	0.0%	0.0%
30	A483 - FROM A4081 TO A470 - LLANDRINDOD WELLS	8121	270	0	0	8121	270	0.0%	0.0%
31	B4392 - From A458 to A483 N of Welshpool	1457	145	0	0	1457	145	0.0%	0.0%
32	A470 - From A458 to Dolgellau	2121	80	3	2	2124	82	0.1%	2.5%
33	A489 - From A470 to Machynlleth	3194	158	3	2	3196	160	0.1%	1.3%

Jan-17

## ALL TRAFFIC IS TWO WAY DAILY FLOWS, ON MONTHLY TIME PERIODS

LINK INFORMATION		BASE NETWORK FLOWS		STMP FLOWS (BASE + DISTRIBUTED)		TOTAL FLOWS		% IMPACT	
LINK	LOCATION	AADT	HGV	AADT	HGV	AADT	HGV	AADT	HGV
1	A483 - FROM A5 TO A539 SOUTH OF WREXHAM	25575	2112	0	0	25575	2112	0.0%	0.0%
2	A5 - FROM A5 CHIRK TO A495 NORTH OF OSWESTRY	25302	2048	0	0	25302	2048	0.0%	0.0%
3	A5 - BETWEEN A483 & A495, EAST OF OSWESTRY	25691	2388	0	0	25691	2388	0.0%	0.0%
4	A5 - EAST OF A483 TOWARDS SHREWSBURY	19516	1310	0	0	19516	1310	0.0%	0.0%
5	A483 - FROM A495 TO A5	12631	1065	0	0	12631	1065	0.0%	0.0%
6	A483 - FROM A458 TO A495	8781	927	10	8	8791	935	0.1%	0.8%
7	A458 - FROM A483 TO SHREWSBURY - EAST OF WELSHPOOL	8135	678	10	8	8145	686	0.1%	1.1%
8	A483 - BETWEEN A458/A483 AND WELSHPOOL STATION	14583	1110	20	16	14604	1125	0.1%	1.4%
9	A458 - From A483 To B4392 - WELSHPOOL CENTRE	4645	258	20	16	4666	273	0.4%	6.0%
10	A458 - From B4392 To A495	4365	196	0	0	4365	196	0.0%	0.0%
11	A495 - FROM A458 TO A483, NORTH OF WELSHPOOL	3895	228	0	0	3895	228	0.0%	0.0%
12	A458 - FROM A495 TO B4395	4558	162	0	0	4558	162	0.0%	0.0%
13	A458 - FROM B4395 to A470	2653	114	0	0	2653	114	0.0%	0.0%
14	A483 - FROM WELSHPOOL TO NEWTOWN A489	10181	1222	41	31	10222	1253	0.4%	2.5%
15	A483 - FROM A489 TO A483 - NEWTOWN CENTRE	16781	1439	41	31	16822	1470	0.2%	2.2%
16	A489 - FROM A483 TO A470	7974	588	41	31	8015	619	0.5%	5.3%
17	A470 - BETWEEN A489 AND TALERDDIG	3498	418	82	62	3580	480	2.3%	14.9%
18	A470 - BETWEEN TALERDDIG AND CEMMAES	2118	248	5	3	2123	252	0.2%	1.4%
19	A470 - BETWEEN CEMMAES AND A458	2411	146	2	2	2413	148	0.1%	1.2%
21	A470 - FROM A489 TO B4518 LLANIDLOES	6269	511	5	3	6274	515	0.1%	0.7%
22	A489 - BETWEEN A483 NEWTOWN AND KERRY	2549	145	0	0	2549	145	0.0%	0.0%
24	A483 - BETWEEN A483/A489 IN NEWTOWN AND DOLFOR	2361	232	0	0	2361	232	0.0%	0.0%
25	A483 - FROM DOLFOR TO B4356	2759	156	0	0	2759	156	0.0%	0.0%
26	A483 - FROM B4356 TO A44	3079	178	0	0	3079	178	0.0%	0.0%
27	A44 - FROM A483 TO A488 CROSSGATES EAST	3856	224	0	0	3856	224	0.0%	0.0%
28	A44 - FROM A483 TO A470 - CROSSGATES WEST	1848	112	0	0	1848	112	0.0%	0.0%
29	A483 - FROM A44 TO A4081 - LLANDRINDOD WELLS	7425	305	0	0	7425	305	0.0%	0.0%
30	A483 - FROM A4081 TO A470 - LLANDRINDOD WELLS	8205	273	0	0	8205	273	0.0%	0.0%
31	B4392 - From A458 to A483 N of Welshpool	1472	147	0	0	1472	147	0.0%	0.0%
32	A470 - From A458 to Dolgellau	2144	81	2	2	2146	83	0.1%	2.1%
33	A489 - From A470 to Machynlleth	3228	159	2	2	3230	161	0.1%	1.1%

Feb-17

## ALL TRAFFIC IS TWO WAY DAILY FLOWS, ON MONTHLY TIME PERIODS

LINK INFORMATION		BASE NETWORK FLOWS		STMP FLOWS (BASE + DISTRIBUTED)		TOTAL FLOWS		% IMPACT	
LINK	LOCATION	AADT	HGV	AADT	HGV	AADT	HGV	AADT	HGV
1	A483 - FROM A5 TO A539 SOUTH OF WREXHAM	25575	2112	0	0	25575	2112	0.0%	0.0%
2	A5 - FROM A5 CHIRK TO A495 NORTH OF OSWESTRY	25302	2048	0	0	25302	2048	0.0%	0.0%
3	A5 - BETWEEN A483 & A495, EAST OF OSWESTRY	25691	2388	0	0	25691	2388	0.0%	0.0%
4	A5 - EAST OF A483 TOWARDS SHREWSBURY	19516	1310	0	0	19516	1310	0.0%	0.0%
5	A483 - FROM A495 TO A5	12631	1065	0	0	12631	1065	0.0%	0.0%
6	A483 - FROM A458 TO A495	8781	927	12	9	8793	936	0.1%	1.0%
7	A458 - FROM A483 TO SHREWSBURY - EAST OF WELSHPOOL	8135	678	12	9	8147	687	0.1%	1.3%
8	A483 - BETWEEN A458/A483 AND WELSHPOOL STATION	14583	1110	23	18	14607	1128	0.2%	1.6%
9	A458 - From A483 To B4392 - WELSHPOOL CENTRE	4645	258	23	18	4668	276	0.5%	7.1%
10	A458 - From B4392 To A495	4365	196	0	0	4365	196	0.0%	0.0%
11	A495 - FROM A458 TO A483, NORTH OF WELSHPOOL	3895	228	0	0	3895	228	0.0%	0.0%
12	A458 - FROM A495 TO B4395	4558	162	0	0	4558	162	0.0%	0.0%
13	A458 - FROM B4395 to A470	2653	114	0	0	2653	114	0.0%	0.0%
14	A483 - FROM WELSHPOOL TO NEWTOWN A489	10181	1222	46	36	10228	1258	0.5%	3.0%
15	A483 - FROM A489 TO A483 - NEWTOWN CENTRE	16781	1439	46	36	16827	1476	0.3%	2.5%
16	A489 - FROM A483 TO A470	7974	588	46	36	8020	624	0.6%	6.2%
17	A470 - BETWEEN A489 AND TALERDDIG	3498	418	93	73	3590	491	2.7%	17.4%
18	A470 - BETWEEN TALERDDIG AND CEMMAES	2118	248	5	4	2124	253	0.2%	1.6%
19	A470 - BETWEEN CEMMAES AND A458	2411	146	3	2	2413	148	0.1%	1.4%
21	A470 - FROM A489 TO B4518 LLANIDLOES	6269	511	5	4	6274	515	0.1%	0.8%
22	A489 - BETWEEN A483 NEWTOWN AND KERRY	2549	145	0	0	2549	145	0.0%	0.0%
24	A483 - BETWEEN A483/A489 IN NEWTOWN AND DOLFOR	2361	232	0	0	2361	232	0.0%	0.0%
25	A483 - FROM DOLFOR TO B4356	2759	156	0	0	2759	156	0.0%	0.0%
26	A483 - FROM B4356 TO A44	3079	178	0	0	3079	178	0.0%	0.0%
27	A44 - FROM A483 TO A488 CROSSGATES EAST	3856	224	0	0	3856	224	0.0%	0.0%
28	A44 - FROM A483 TO A470 - CROSSGATES WEST	1848	112	0	0	1848	112	0.0%	0.0%
29	A483 - FROM A44 TO A4081 - LLANDRINDOD WELLS	7425	305	0	0	7425	305	0.0%	0.0%
30	A483 - FROM A4081 TO A470 - LLANDRINDOD WELLS	8205	273	0	0	8205	273	0.0%	0.0%
31	B4392 - From A458 to A483 N of Welshpool	1472	147	0	0	1472	147	0.0%	0.0%
32	A470 - From A458 to Dolgellau	2144	81	3	2	2146	83	0.1%	2.5%
33	A489 - From A470 to Machynlleth	3228	159	3	2	3230	161	0.1%	1.3%

Mar-17

## ALL TRAFFIC IS TWO WAY DAILY FLOWS, ON MONTHLY TIME PERIODS

LINK INFORMATION		BASE NETWORK FLOWS		STMP FLOWS (BASE + DISTRIBUTED)		TOTAL FLOWS		% IMPACT	
LINK	LOCATION	AADT	HGV	AADT	HGV	AADT	HGV	AADT	HGV
1	A483 - FROM A5 TO A539 SOUTH OF WREXHAM	25575	2112	0	0	25575	2112	0.0%	0.0%
2	A5 - FROM A5 CHIRK TO A495 NORTH OF OSWESTRY	25302	2048	0	0	25302	2048	0.0%	0.0%
3	A5 - BETWEEN A483 & A495, EAST OF OSWESTRY	25691	2388	0	0	25691	2388	0.0%	0.0%
4	A5 - EAST OF A483 TOWARDS SHREWSBURY	19516	1310	0	0	19516	1310	0.0%	0.0%
5	A483 - FROM A495 TO A5	12631	1065	0	0	12631	1065	0.0%	0.0%
6	A483 - FROM A458 TO A495	8781	927	13	10	8794	937	0.1%	1.1%
7	A458 - FROM A483 TO SHREWSBURY - EAST OF WELSHPOOL	8135	678	13	10	8148	689	0.2%	1.5%
8	A483 - BETWEEN A458/A483 AND WELSHPOOL STATION	14583	1110	26	21	14609	1130	0.2%	1.9%
9	A458 - From A483 To B4392 - WELSHPOOL CENTRE	4645	258	26	21	4671	278	0.6%	8.0%
10	A458 - From B4392 To A495	4365	196	0	0	4365	196	0.0%	0.0%
11	A495 - FROM A458 TO A483, NORTH OF WELSHPOOL	3895	228	0	0	3895	228	0.0%	0.0%
12	A458 - FROM A495 TO B4395	4558	162	0	0	4558	162	0.0%	0.0%
13	A458 - FROM B4395 to A470	2653	114	0	0	2653	114	0.0%	0.0%
14	A483 - FROM WELSHPOOL TO NEWTOWN A489	10181	1222	51	41	10233	1263	0.5%	3.4%
15	A483 - FROM A489 TO A483 - NEWTOWN CENTRE	16781	1439	51	41	16832	1481	0.3%	2.9%
16	A489 - FROM A483 TO A470	7974	588	51	41	8025	629	0.6%	7.0%
17	A470 - BETWEEN A489 AND TALERDDIG	3498	418	103	83	3600	501	2.9%	19.8%
18	A470 - BETWEEN TALERDDIG AND CEMMAES	2118	248	6	5	2124	253	0.3%	1.9%
19	A470 - BETWEEN CEMMAES AND A458	2411	146	3	2	2413	148	0.1%	1.6%
21	A470 - FROM A489 TO B4518 LLANIDLOES	6269	511	6	5	6275	516	0.1%	0.9%
22	A489 - BETWEEN A483 NEWTOWN AND KERRY	2549	145	0	0	2549	145	0.0%	0.0%
24	A483 - BETWEEN A483/A489 IN NEWTOWN AND DOLFOR	2361	232	0	0	2361	232	0.0%	0.0%
25	A483 - FROM DOLFOR TO B4356	2759	156	0	0	2759	156	0.0%	0.0%
26	A483 - FROM B4356 TO A44	3079	178	0	0	3079	178	0.0%	0.0%
27	A44 - FROM A483 TO A488 CROSSGATES EAST	3856	224	0	0	3856	224	0.0%	0.0%
28	A44 - FROM A483 TO A470 - CROSSGATES WEST	1848	112	0	0	1848	112	0.0%	0.0%
29	A483 - FROM A44 TO A4081 - LLANDRINDOD WELLS	7425	305	0	0	7425	305	0.0%	0.0%
30	A483 - FROM A4081 TO A470 - LLANDRINDOD WELLS	8205	273	0	0	8205	273	0.0%	0.0%
31	B4392 - From A458 to A483 N of Welshpool	1472	147	0	0	1472	147	0.0%	0.0%
32	A470 - From A458 to Dolgellau	2144	81	3	2	2147	83	0.1%	2.8%
33	A489 - From A470 to Machynlleth	3228	159	3	2	3231	162	0.1%	1.4%

Apr-17

## ALL TRAFFIC IS TWO WAY DAILY FLOWS, ON MONTHLY TIME PERIODS

LINK INFORMATION		BASE NETWORK FLOWS		STMP FLOWS (BASE + DISTRIBUTED)		TOTAL FLOWS		% IMPACT	
LINK	LOCATION	AADT	HGV	AADT	HGV	AADT	HGV	AADT	HGV
1	A483 - FROM A5 TO A539 SOUTH OF WREXHAM	25575	2112	0	0	25575	2112	0.0%	0.0%
2	A5 - FROM A5 CHIRK TO A495 NORTH OF OSWESTRY	25302	2048	0	0	25302	2048	0.0%	0.0%
3	A5 - BETWEEN A483 & A495, EAST OF OSWESTRY	25691	2388	0	0	25691	2388	0.0%	0.0%
4	A5 - EAST OF A483 TOWARDS SHREWSBURY	19516	1310	0	0	19516	1310	0.0%	0.0%
5	A483 - FROM A495 TO A5	12631	1065	0	0	12631	1065	0.0%	0.0%
6	A483 - FROM A458 TO A495	8781	927	11	9	8792	935	0.1%	0.9%
7	A458 - FROM A483 TO SHREWSBURY - EAST OF WELSHPOOL	8135	678	11	9	8146	687	0.1%	1.3%
8	A483 - BETWEEN A458/A483 AND WELSHPOOL STATION	14583	1110	22	17	14605	1127	0.2%	1.5%
9	A458 - From A483 To B4392 - WELSHPOOL CENTRE	4645	258	22	17	4667	275	0.5%	6.6%
10	A458 - From B4392 To A495	4365	196	0	0	4365	196	0.0%	0.0%
11	A495 - FROM A458 TO A483, NORTH OF WELSHPOOL	3895	228	0	0	3895	228	0.0%	0.0%
12	A458 - FROM A495 TO B4395	4558	162	0	0	4558	162	0.0%	0.0%
13	A458 - FROM B4395 to A470	2653	114	0	0	2653	114	0.0%	0.0%
14	A483 - FROM WELSHPOOL TO NEWTOWN A489	10181	1222	44	34	10225	1256	0.4%	2.8%
15	A483 - FROM A489 TO A483 - NEWTOWN CENTRE	16781	1439	44	34	16825	1473	0.3%	2.4%
16	A489 - FROM A483 TO A470	7974	588	44	34	8018	622	0.6%	5.8%
17	A470 - BETWEEN A489 AND TALERDDIG	3498	418	88	68	3586	486	2.5%	16.4%
18	A470 - BETWEEN TALERDDIG AND CEMMAES	2118	248	5	4	2123	252	0.2%	1.5%
19	A470 - BETWEEN CEMMAES AND A458	2411	146	2	2	2413	148	0.1%	1.3%
21	A470 - FROM A489 TO B4518 LLANIDLOES	6269	511	5	4	6274	515	0.1%	0.7%
22	A489 - BETWEEN A483 NEWTOWN AND KERRY	2549	145	0	0	2549	145	0.0%	0.0%
24	A483 - BETWEEN A483/A489 IN NEWTOWN AND DOLFOR	2361	232	0	0	2361	232	0.0%	0.0%
25	A483 - FROM DOLFOR TO B4356	2759	156	0	0	2759	156	0.0%	0.0%
26	A483 - FROM B4356 TO A44	3079	178	0	0	3079	178	0.0%	0.0%
27	A44 - FROM A483 TO A488 CROSSGATES EAST	3856	224	0	0	3856	224	0.0%	0.0%
28	A44 - FROM A483 TO A470 - CROSSGATES WEST	1848	112	0	0	1848	112	0.0%	0.0%
29	A483 - FROM A44 TO A4081 - LLANDRINDOD WELLS	7425	305	0	0	7425	305	0.0%	0.0%
30	A483 - FROM A4081 TO A470 - LLANDRINDOD WELLS	8205	273	0	0	8205	273	0.0%	0.0%
31	B4392 - From A458 to A483 N of Welshpool	1472	147	0	0	1472	147	0.0%	0.0%
32	A470 - From A458 to Dolgellau	2144	81	2	2	2146	83	0.1%	2.3%
33	A489 - From A470 to Machynlleth	3228	159	2	2	3230	161	0.1%	1.2%

May-17

## ALL TRAFFIC IS TWO WAY DAILY FLOWS, ON MONTHLY TIME PERIODS

LINK INFORMATION		BASE NETWORK FLOWS		STMP FLOWS (BASE + DISTRIBUTED)		TOTAL FLOWS		% IMPACT	
LINK	LOCATION	AADT	HGV	AADT	HGV	AADT	HGV	AADT	HGV
1	A483 - FROM A5 TO A539 SOUTH OF WREXHAM	25575	2112	0	0	25575	2112	0.0%	0.0%
2	A5 - FROM A5 CHIRK TO A495 NORTH OF OSWESTRY	25302	2048	0	0	25302	2048	0.0%	0.0%
3	A5 - BETWEEN A483 & A495, EAST OF OSWESTRY	25691	2388	0	0	25691	2388	0.0%	0.0%
4	A5 - EAST OF A483 TOWARDS SHREWSBURY	19516	1310	0	0	19516	1310	0.0%	0.0%
5	A483 - FROM A495 TO A5	12631	1065	0	0	12631	1065	0.0%	0.0%
6	A483 - FROM A458 TO A495	8781	927	14	12	8795	938	0.2%	1.3%
7	A458 - FROM A483 TO SHREWSBURY - EAST OF WELSHPOOL	8135	678	14	12	8149	690	0.2%	1.7%
8	A483 - BETWEEN A458/A483 AND WELSHPOOL STATION	14583	1110	28	23	14612	1133	0.2%	2.1%
9	A458 - From A483 To B4392 - WELSHPOOL CENTRE	4645	258	28	23	4673	281	0.6%	9.0%
10	A458 - From B4392 To A495	4365	196	0	0	4365	196	0.0%	0.0%
11	A495 - FROM A458 TO A483, NORTH OF WELSHPOOL	3895	228	0	0	3895	228	0.0%	0.0%
12	A458 - FROM A495 TO B4395	4558	162	0	0	4558	162	0.0%	0.0%
13	A458 - FROM B4395 to A470	2653	114	0	0	2653	114	0.0%	0.0%
14	A483 - FROM WELSHPOOL TO NEWTOWN A489	10181	1222	56	46	10238	1268	0.6%	3.8%
15	A483 - FROM A489 TO A483 - NEWTOWN CENTRE	16781	1439	56	46	16837	1486	0.3%	3.2%
16	A489 - FROM A483 TO A470	7974	588	56	46	8030	634	0.7%	7.9%
17	A470 - BETWEEN A489 AND TALERDDIG	3498	418	113	93	3610	511	3.2%	22.2%
18	A470 - BETWEEN TALERDDIG AND CEMMAES	2118	248	6	5	2125	254	0.3%	2.1%
19	A470 - BETWEEN CEMMAES AND A458	2411	146	3	3	2414	149	0.1%	1.8%
21	A470 - FROM A489 TO B4518 LLANIDLOES	6269	511	6	5	6275	517	0.1%	1.0%
22	A489 - BETWEEN A483 NEWTOWN AND KERRY	2549	145	0	0	2549	145	0.0%	0.0%
24	A483 - BETWEEN A483/A489 IN NEWTOWN AND DOLFOR	2361	232	0	0	2361	232	0.0%	0.0%
25	A483 - FROM DOLFOR TO B4356	2759	156	0	0	2759	156	0.0%	0.0%
26	A483 - FROM B4356 TO A44	3079	178	0	0	3079	178	0.0%	0.0%
27	A44 - FROM A483 TO A488 CROSSGATES EAST	3856	224	0	0	3856	224	0.0%	0.0%
28	A44 - FROM A483 TO A470 - CROSSGATES WEST	1848	112	0	0	1848	112	0.0%	0.0%
29	A483 - FROM A44 TO A4081 - LLANDRINDOD WELLS	7425	305	0	0	7425	305	0.0%	0.0%
30	A483 - FROM A4081 TO A470 - LLANDRINDOD WELLS	8205	273	0	0	8205	273	0.0%	0.0%
31	B4392 - From A458 to A483 N of Welshpool	1472	147	0	0	1472	147	0.0%	0.0%
32	A470 - From A458 to Dolgellau	2144	81	3	3	2147	84	0.1%	3.2%
33	A489 - From A470 to Machynlleth	3228	159	3	3	3231	162	0.1%	1.6%

Jun-17

## ALL TRAFFIC IS TWO WAY DAILY FLOWS, ON MONTHLY TIME PERIODS

LINK INFORMATION		BASE NETWORK FLOWS		STMP FLOWS (BASE + DISTRIBUTED)		TOTAL FLOWS		% IMPACT	
LINK	LOCATION	AADT	HGV	AADT	HGV	AADT	HGV	AADT	HGV
1	A483 - FROM A5 TO A539 SOUTH OF WREXHAM	25575	2112	0	0	25575	2112	0.0%	0.0%
2	A5 - FROM A5 CHIRK TO A495 NORTH OF OSWESTRY	25302	2048	0	0	25302	2048	0.0%	0.0%
3	A5 - BETWEEN A483 & A495, EAST OF OSWESTRY	25691	2388	0	0	25691	2388	0.0%	0.0%
4	A5 - EAST OF A483 TOWARDS SHREWSBURY	19516	1310	0	0	19516	1310	0.0%	0.0%
5	A483 - FROM A495 TO A5	12631	1065	0	0	12631	1065	0.0%	0.0%
6	A483 - FROM A458 TO A495	8781	927	15	13	8796	940	0.2%	1.4%
7	A458 - FROM A483 TO SHREWSBURY - EAST OF WELSHPOOL	8135	678	15	13	8150	691	0.2%	1.9%
8	A483 - BETWEEN A458/A483 AND WELSHPOOL STATION	14583	1110	30	25	14614	1135	0.2%	2.3%
9	A458 - From A483 To B4392 - WELSHPOOL CENTRE	4645	258	30	25	4676	283	0.7%	9.9%
10	A458 - From B4392 To A495	4365	196	0	0	4365	196	0.0%	0.0%
11	A495 - FROM A458 TO A483, NORTH OF WELSHPOOL	3895	228	0	0	3895	228	0.0%	0.0%
12	A458 - FROM A495 TO B4395	4558	162	0	0	4558	162	0.0%	0.0%
13	A458 - FROM B4395 to A470	2653	114	0	0	2653	114	0.0%	0.0%
14	A483 - FROM WELSHPOOL TO NEWTOWN A489	10181	1222	61	51	10242	1273	0.6%	4.2%
15	A483 - FROM A489 TO A483 - NEWTOWN CENTRE	16781	1439	61	51	16842	1490	0.4%	3.5%
16	A489 - FROM A483 TO A470	7974	588	61	51	8034	639	0.8%	8.6%
17	A470 - BETWEEN A489 AND TALERDDIG	3498	418	122	102	3619	520	3.5%	24.3%
18	A470 - BETWEEN TALERDDIG AND CEMMAES	2118	248	7	6	2125	254	0.3%	2.3%
19	A470 - BETWEEN CEMMAES AND A458	2411	146	3	3	2414	149	0.1%	1.9%
21	A470 - FROM A489 TO B4518 LLANIDLOES	6269	511	7	6	6276	517	0.1%	1.1%
22	A489 - BETWEEN A483 NEWTOWN AND KERRY	2549	145	0	0	2549	145	0.0%	0.0%
24	A483 - BETWEEN A483/A489 IN NEWTOWN AND DOLFOR	2361	232	0	0	2361	232	0.0%	0.0%
25	A483 - FROM DOLFOR TO B4356	2759	156	0	0	2759	156	0.0%	0.0%
26	A483 - FROM B4356 TO A44	3079	178	0	0	3079	178	0.0%	0.0%
27	A44 - FROM A483 TO A488 CROSSGATES EAST	3856	224	0	0	3856	224	0.0%	0.0%
28	A44 - FROM A483 TO A470 - CROSSGATES WEST	1848	112	0	0	1848	112	0.0%	0.0%
29	A483 - FROM A44 TO A4081 - LLANDRINDOD WELLS	7425	305	0	0	7425	305	0.0%	0.0%
30	A483 - FROM A4081 TO A470 - LLANDRINDOD WELLS	8205	273	0	0	8205	273	0.0%	0.0%
31	B4392 - From A458 to A483 N of Welshpool	1472	147	0	0	1472	147	0.0%	0.0%
32	A470 - From A458 to Dolgellau	2144	81	3	3	2147	84	0.2%	3.5%
33	A489 - From A470 to Machynlleth	3228	159	3	3	3231	162	0.1%	1.8%



Jul-17

## ALL TRAFFIC IS TWO WAY DAILY FLOWS, ON MONTHLY TIME PERIODS

LINK INFORMATION		BASE NETWORK FLOWS		STMP FLOWS (BASE + DISTRIBUTED)		TOTAL FLOWS		% IMPACT	
LINK	LOCATION	AADT	HGV	AADT	HGV	AADT	HGV	AADT	HGV
1	A483 - FROM A5 TO A539 SOUTH OF WREXHAM	25575	2112	0	0	25575	2112	0.0%	0.0%
2	A5 - FROM A5 CHIRK TO A495 NORTH OF OSWESTRY	25302	2048	0	0	25302	2048	0.0%	0.0%
3	A5 - BETWEEN A483 & A495, EAST OF OSWESTRY	25691	2388	0	0	25691	2388	0.0%	0.0%
4	A5 - EAST OF A483 TOWARDS SHREWSBURY	19516	1310	0	0	19516	1310	0.0%	0.0%
5	A483 - FROM A495 TO A5	12631	1065	0	0	12631	1065	0.0%	0.0%
6	A483 - FROM A458 TO A495	8781	927	11	9	8792	936	0.1%	1.0%
7	A458 - FROM A483 TO SHREWSBURY - EAST OF WELSHPOOL	8135	678	11	9	8146	687	0.1%	1.3%
8	A483 - BETWEEN A458/A483 AND WELSHPOOL STATION	14583	1110	23	18	14606	1128	0.2%	1.6%
9	A458 - From A483 To B4392 - WELSHPOOL CENTRE	4645	258	23	18	4668	276	0.5%	6.9%
10	A458 - From B4392 To A495	4365	196	0	0	4365	196	0.0%	0.0%
11	A495 - FROM A458 TO A483, NORTH OF WELSHPOOL	3895	228	0	0	3895	228	0.0%	0.0%
12	A458 - FROM A495 TO B4395	4558	162	0	0	4558	162	0.0%	0.0%
13	A458 - FROM B4395 to A470	2653	114	0	0	2653	114	0.0%	0.0%
14	A483 - FROM WELSHPOOL TO NEWTOWN A489	10181	1222	45	36	10227	1258	0.4%	2.9%
15	A483 - FROM A489 TO A483 - NEWTOWN CENTRE	16781	1439	45	36	16826	1475	0.3%	2.5%
16	A489 - FROM A483 TO A470	7974	588	45	36	8019	623	0.6%	6.0%
17	A470 - BETWEEN A489 AND TALERDDIG	3498	418	91	71	3589	489	2.6%	17.0%
18	A470 - BETWEEN TALERDDIG AND CEMMAES	2118	248	5	4	2124	252	0.2%	1.6%
19	A470 - BETWEEN CEMMAES AND A458	2411	146	3	2	2413	148	0.1%	1.4%
21	A470 - FROM A489 TO B4518 LLANIDLOES	6269	511	5	4	6274	515	0.1%	0.8%
22	A489 - BETWEEN A483 NEWTOWN AND KERRY	2549	145	0	0	2549	145	0.0%	0.0%
24	A483 - BETWEEN A483/A489 IN NEWTOWN AND DOLFOR	2361	232	0	0	2361	232	0.0%	0.0%
25	A483 - FROM DOLFOR TO B4356	2759	156	0	0	2759	156	0.0%	0.0%
26	A483 - FROM B4356 TO A44	3079	178	0	0	3079	178	0.0%	0.0%
27	A44 - FROM A483 TO A488 CROSSGATES EAST	3856	224	0	0	3856	224	0.0%	0.0%
28	A44 - FROM A483 TO A470 - CROSSGATES WEST	1848	112	0	0	1848	112	0.0%	0.0%
29	A483 - FROM A44 TO A4081 - LLANDRINDOD WELLS	7425	305	0	0	7425	305	0.0%	0.0%
30	A483 - FROM A4081 TO A470 - LLANDRINDOD WELLS	8205	273	0	0	8205	273	0.0%	0.0%
31	B4392 - From A458 to A483 N of Welshpool	1472	147	0	0	1472	147	0.0%	0.0%
32	A470 - From A458 to Dolgellau	2144	81	3	2	2146	83	0.1%	2.4%
33	A489 - From A470 to Machynlleth	3228	159	3	2	3230	161	0.1%	1.2%

Aug-17

## ALL TRAFFIC IS TWO WAY DAILY FLOWS, ON MONTHLY TIME PERIODS

LINK INFORMATION		BASE NETWORK FLOWS		STMP FLOWS (BASE + DISTRIBUTED)		TOTAL FLOWS		% IMPACT	
LINK	LOCATION	AADT	HGV	AADT	HGV	AADT	HGV	AADT	HGV
1	A483 - FROM A5 TO A539 SOUTH OF WREXHAM	25575	2112	0	0	25575	2112	0.0%	0.0%
2	A5 - FROM A5 CHIRK TO A495 NORTH OF OSWESTRY	25302	2048	0	0	25302	2048	0.0%	0.0%
3	A5 - BETWEEN A483 & A495, EAST OF OSWESTRY	25691	2388	0	0	25691	2388	0.0%	0.0%
4	A5 - EAST OF A483 TOWARDS SHREWSBURY	19516	1310	0	0	19516	1310	0.0%	0.0%
5	A483 - FROM A495 TO A5	12631	1065	0	0	12631	1065	0.0%	0.0%
6	A483 - FROM A458 TO A495	8781	927	13	11	8794	937	0.1%	1.1%
7	A458 - FROM A483 TO SHREWSBURY - EAST OF WELSHPOOL	8135	678	13	11	8148	689	0.2%	1.6%
8	A483 - BETWEEN A458/A483 AND WELSHPOOL STATION	14583	1110	26	21	14609	1131	0.2%	1.9%
9	A458 - From A483 To B4392 - WELSHPOOL CENTRE	4645	258	26	21	4671	279	0.6%	8.2%
10	A458 - From B4392 To A495	4365	196	0	0	4365	196	0.0%	0.0%
11	A495 - FROM A458 TO A483, NORTH OF WELSHPOOL	3895	228	0	0	3895	228	0.0%	0.0%
12	A458 - FROM A495 TO B4395	4558	162	0	0	4558	162	0.0%	0.0%
13	A458 - FROM B4395 to A470	2653	114	0	0	2653	114	0.0%	0.0%
14	A483 - FROM WELSHPOOL TO NEWTOWN A489	10181	1222	52	42	10233	1264	0.5%	3.5%
15	A483 - FROM A489 TO A483 - NEWTOWN CENTRE	16781	1439	52	42	16833	1482	0.3%	2.9%
16	A489 - FROM A483 TO A470	7974	588	52	42	8026	630	0.7%	7.2%
17	A470 - BETWEEN A489 AND TALERDDIG	3498	418	104	85	3602	502	3.0%	20.2%
18	A470 - BETWEEN TALERDDIG AND CEMMAES	2118	248	6	5	2124	253	0.3%	1.9%
19	A470 - BETWEEN CEMMAES AND A458	2411	146	3	2	2413	148	0.1%	1.6%
21	A470 - FROM A489 TO B4518 LLANIDLOES	6269	511	6	5	6275	516	0.1%	0.9%
22	A489 - BETWEEN A483 NEWTOWN AND KERRY	2549	145	0	0	2549	145	0.0%	0.0%
24	A483 - BETWEEN A483/A489 IN NEWTOWN AND DOLFOR	2361	232	0	0	2361	232	0.0%	0.0%
25	A483 - FROM DOLFOR TO B4356	2759	156	0	0	2759	156	0.0%	0.0%
26	A483 - FROM B4356 TO A44	3079	178	0	0	3079	178	0.0%	0.0%
27	A44 - FROM A483 TO A488 CROSSGATES EAST	3856	224	0	0	3856	224	0.0%	0.0%
28	A44 - FROM A483 TO A470 - CROSSGATES WEST	1848	112	0	0	1848	112	0.0%	0.0%
29	A483 - FROM A44 TO A4081 - LLANDRINDOD WELLS	7425	305	0	0	7425	305	0.0%	0.0%
30	A483 - FROM A4081 TO A470 - LLANDRINDOD WELLS	8205	273	0	0	8205	273	0.0%	0.0%
31	B4392 - From A458 to A483 N of Welshpool	1472	147	0	0	1472	147	0.0%	0.0%
32	A470 - From A458 to Dolgellau	2144	81	3	2	2147	83	0.1%	2.9%
33	A489 - From A470 to Machynlleth	3228	159	3	2	3231	162	0.1%	1.5%

Sep-17

**ALL TRAFFIC IS TWO WAY DAILY FLOWS, ON MONTHLY TIME PERIODS**

LINK INFORMATION		BASE NETWORK FLOWS		STMP FLOWS (BASE + DISTRIBUTED)		TOTAL FLOWS		% IMPACT	
LINK	LOCATION	AADT	HGV	AADT	HGV	AADT	HGV	AADT	HGV
1	A483 - FROM A5 TO A539 SOUTH OF WREXHAM	25575	2112	0	0	25575	2112	0.0%	0.0%
2	A5 - FROM A5 CHIRK TO A495 NORTH OF OSWESTRY	25302	2048	0	0	25302	2048	0.0%	0.0%
3	A5 - BETWEEN A483 & A495, EAST OF OSWESTRY	25691	2388	0	0	25691	2388	0.0%	0.0%
4	A5 - EAST OF A483 TOWARDS SHREWSBURY	19516	1310	0	0	19516	1310	0.0%	0.0%
5	A483 - FROM A495 TO A5	12631	1065	0	0	12631	1065	0.0%	0.0%
6	A483 - FROM A458 TO A495	8781	927	9	6	8790	933	0.1%	0.7%
7	A458 - FROM A483 TO SHREWSBURY - EAST OF WELSHPOOL	8135	678	9	6	8144	684	0.1%	0.9%
8	A483 - BETWEEN A458/A483 AND WELSHPOOL STATION	14583	1110	17	12	14600	1122	0.1%	1.1%
9	A458 - From A483 To B4392 - WELSHPOOL CENTRE	4645	258	17	12	4662	270	0.4%	4.7%
10	A458 - From B4392 To A495	4365	196	0	0	4365	196	0.0%	0.0%
11	A495 - FROM A458 TO A483, NORTH OF WELSHPOOL	3895	228	0	0	3895	228	0.0%	0.0%
12	A458 - FROM A495 TO B4395	4558	162	0	0	4558	162	0.0%	0.0%
13	A458 - FROM B4395 to A470	2653	114	0	0	2653	114	0.0%	0.0%
14	A483 - FROM WELSHPOOL TO NEWTOWN A489	10181	1222	34	24	10215	1246	0.3%	2.0%
15	A483 - FROM A489 TO A483 - NEWTOWN CENTRE	16781	1439	34	24	16815	1464	0.2%	1.7%
16	A489 - FROM A483 TO A470	7974	588	34	24	8008	612	0.4%	4.1%
17	A470 - BETWEEN A489 AND TALERDDIG	3498	418	68	49	3566	466	2.0%	11.6%
18	A470 - BETWEEN TALERDDIG AND CEMMAES	2118	248	4	3	2122	251	0.2%	1.1%
19	A470 - BETWEEN CEMMAES AND A458	2411	146	2	1	2412	147	0.1%	0.9%
21	A470 - FROM A489 TO B4518 LLANIDLOES	6269	511	4	3	6273	514	0.1%	0.5%
22	A489 - BETWEEN A483 NEWTOWN AND KERRY	2549	145	0	0	2549	145	0.0%	0.0%
24	A483 - BETWEEN A483/A489 IN NEWTOWN AND DOLFOR	2361	232	0	0	2361	232	0.0%	0.0%
25	A483 - FROM DOLFOR TO B4356	2759	156	0	0	2759	156	0.0%	0.0%
26	A483 - FROM B4356 TO A44	3079	178	0	0	3079	178	0.0%	0.0%
27	A44 - FROM A483 TO A488 CROSSGATES EAST	3856	224	0	0	3856	224	0.0%	0.0%
28	A44 - FROM A483 TO A470 - CROSSGATES WEST	1848	112	0	0	1848	112	0.0%	0.0%
29	A483 - FROM A44 TO A4081 - LLANDRINDOD WELLS	7425	305	0	0	7425	305	0.0%	0.0%
30	A483 - FROM A4081 TO A470 - LLANDRINDOD WELLS	8205	273	0	0	8205	273	0.0%	0.0%
31	B4392 - From A458 to A483 N of Welshpool	1472	147	0	0	1472	147	0.0%	0.0%
32	A470 - From A458 to Dolgellau	2144	81	2	1	2146	82	0.1%	1.7%
33	A489 - From A470 to Machynlleth	3228	159	2	1	3230	161	0.1%	0.8%

Oct-17

## ALL TRAFFIC IS TWO WAY DAILY FLOWS, ON MONTHLY TIME PERIODS

LINK INFORMATION		BASE NETWORK FLOWS		STMP FLOWS (BASE + DISTRIBUTED)		TOTAL FLOWS		% IMPACT	
LINK	LOCATION	AADT	HGV	AADT	HGV	AADT	HGV	AADT	HGV
1	A483 - FROM A5 TO A539 SOUTH OF WREXHAM	25575	2112	0	0	25575	2112	0.0%	0.0%
2	A5 - FROM A5 CHIRK TO A495 NORTH OF OSWESTRY	25302	2048	0	0	25302	2048	0.0%	0.0%
3	A5 - BETWEEN A483 & A495, EAST OF OSWESTRY	25691	2388	0	0	25691	2388	0.0%	0.0%
4	A5 - EAST OF A483 TOWARDS SHREWSBURY	19516	1310	0	0	19516	1310	0.0%	0.0%
5	A483 - FROM A495 TO A5	12631	1065	0	0	12631	1065	0.0%	0.0%
6	A483 - FROM A458 TO A495	8781	927	8	6	8789	932	0.1%	0.6%
7	A458 - FROM A483 TO SHREWSBURY - EAST OF WELSHPOOL	8135	678	8	6	8143	684	0.1%	0.8%
8	A483 - BETWEEN A458/A483 AND WELSHPOOL STATION	14583	1110	16	11	14600	1121	0.1%	1.0%
9	A458 - From A483 To B4392 - WELSHPOOL CENTRE	4645	258	16	11	4661	269	0.3%	4.4%
10	A458 - From B4392 To A495	4365	196	0	0	4365	196	0.0%	0.0%
11	A495 - FROM A458 TO A483, NORTH OF WELSHPOOL	3895	228	0	0	3895	228	0.0%	0.0%
12	A458 - FROM A495 TO B4395	4558	162	0	0	4558	162	0.0%	0.0%
13	A458 - FROM B4395 to A470	2653	114	0	0	2653	114	0.0%	0.0%
14	A483 - FROM WELSHPOOL TO NEWTOWN A489	10181	1222	32	23	10214	1244	0.3%	1.8%
15	A483 - FROM A489 TO A483 - NEWTOWN CENTRE	16781	1439	32	23	16813	1462	0.2%	1.6%
16	A489 - FROM A483 TO A470	7974	588	32	23	8006	610	0.4%	3.8%
17	A470 - BETWEEN A489 AND TALERDDIG	3498	418	65	45	3562	463	1.9%	10.8%
18	A470 - BETWEEN TALERDDIG AND CEMMAES	2118	248	4	3	2122	251	0.2%	1.0%
19	A470 - BETWEEN CEMMAES AND A458	2411	146	2	1	2412	147	0.1%	0.9%
21	A470 - FROM A489 TO B4518 LLANIDLOES	6269	511	4	3	6273	514	0.1%	0.5%
22	A489 - BETWEEN A483 NEWTOWN AND KERRY	2549	145	0	0	2549	145	0.0%	0.0%
24	A483 - BETWEEN A483/A489 IN NEWTOWN AND DOLFOR	2361	232	0	0	2361	232	0.0%	0.0%
25	A483 - FROM DOLFOR TO B4356	2759	156	0	0	2759	156	0.0%	0.0%
26	A483 - FROM B4356 TO A44	3079	178	0	0	3079	178	0.0%	0.0%
27	A44 - FROM A483 TO A488 CROSSGATES EAST	3856	224	0	0	3856	224	0.0%	0.0%
28	A44 - FROM A483 TO A470 - CROSSGATES WEST	1848	112	0	0	1848	112	0.0%	0.0%
29	A483 - FROM A44 TO A4081 - LLANDRINDOD WELLS	7425	305	0	0	7425	305	0.0%	0.0%
30	A483 - FROM A4081 TO A470 - LLANDRINDOD WELLS	8205	273	0	0	8205	273	0.0%	0.0%
31	B4392 - From A458 to A483 N of Welshpool	1472	147	0	0	1472	147	0.0%	0.0%
32	A470 - From A458 to Dolgellau	2144	81	2	1	2146	82	0.1%	1.5%
33	A489 - From A470 to Machynlleth	3228	159	2	1	3230	160	0.1%	0.8%

Nov-17

## ALL TRAFFIC IS TWO WAY DAILY FLOWS, ON MONTHLY TIME PERIODS

LINK INFORMATION		BASE NETWORK FLOWS		STMP FLOWS (BASE + DISTRIBUTED)		TOTAL FLOWS		% IMPACT	
LINK	LOCATION	AADT	HGV	AADT	HGV	AADT	HGV	AADT	HGV
1	A483 - FROM A5 TO A539 SOUTH OF WREXHAM	25575	2112	0	0	25575	2112	0.0%	0.0%
2	A5 - FROM A5 CHIRK TO A495 NORTH OF OSWESTRY	25302	2048	0	0	25302	2048	0.0%	0.0%
3	A5 - BETWEEN A483 & A495, EAST OF OSWESTRY	25691	2388	0	0	25691	2388	0.0%	0.0%
4	A5 - EAST OF A483 TOWARDS SHREWSBURY	19516	1310	0	0	19516	1310	0.0%	0.0%
5	A483 - FROM A495 TO A5	12631	1065	0	0	12631	1065	0.0%	0.0%
6	A483 - FROM A458 TO A495	8781	927	5	2	8785	929	0.1%	0.2%
7	A458 - FROM A483 TO SHREWSBURY - EAST OF WELSHPOOL	8135	678	5	2	8140	680	0.1%	0.3%
8	A483 - BETWEEN A458/A483 AND WELSHPOOL STATION	14583	1110	9	4	14592	1114	0.1%	0.4%
9	A458 - From A483 To B4392 - WELSHPOOL CENTRE	4645	258	9	4	4654	262	0.2%	1.6%
10	A458 - From B4392 To A495	4365	196	0	0	4365	196	0.0%	0.0%
11	A495 - FROM A458 TO A483, NORTH OF WELSHPOOL	3895	228	0	0	3895	228	0.0%	0.0%
12	A458 - FROM A495 TO B4395	4558	162	0	0	4558	162	0.0%	0.0%
13	A458 - FROM B4395 to A470	2653	114	0	0	2653	114	0.0%	0.0%
14	A483 - FROM WELSHPOOL TO NEWTOWN A489	10181	1222	18	8	10199	1230	0.2%	0.7%
15	A483 - FROM A489 TO A483 - NEWTOWN CENTRE	16781	1439	18	8	16799	1447	0.1%	0.6%
16	A489 - FROM A483 TO A470	7974	588	18	8	7992	596	0.2%	1.4%
17	A470 - BETWEEN A489 AND TALERDDIG	3498	418	36	16	3534	434	1.0%	3.9%
18	A470 - BETWEEN TALERDDIG AND CEMMAES	2118	248	2	1	2120	249	0.1%	0.4%
19	A470 - BETWEEN CEMMAES AND A458	2411	146	1	0	2412	146	0.0%	0.3%
21	A470 - FROM A489 TO B4518 LLANIDLOES	6269	511	2	1	6271	512	0.0%	0.2%
22	A489 - BETWEEN A483 NEWTOWN AND KERRY	2549	145	0	0	2549	145	0.0%	0.0%
24	A483 - BETWEEN A483/A489 IN NEWTOWN AND DOLFOR	2361	232	0	0	2361	232	0.0%	0.0%
25	A483 - FROM DOLFOR TO B4356	2759	156	0	0	2759	156	0.0%	0.0%
26	A483 - FROM B4356 TO A44	3079	178	0	0	3079	178	0.0%	0.0%
27	A44 - FROM A483 TO A488 CROSSGATES EAST	3856	224	0	0	3856	224	0.0%	0.0%
28	A44 - FROM A483 TO A470 - CROSSGATES WEST	1848	112	0	0	1848	112	0.0%	0.0%
29	A483 - FROM A44 TO A4081 - LLANDRINDOD WELLS	7425	305	0	0	7425	305	0.0%	0.0%
30	A483 - FROM A4081 TO A470 - LLANDRINDOD WELLS	8205	273	0	0	8205	273	0.0%	0.0%
31	B4392 - From A458 to A483 N of Welshpool	1472	147	0	0	1472	147	0.0%	0.0%
32	A470 - From A458 to Dolgellau	2144	81	1	0	2145	82	0.0%	0.6%
33	A489 - From A470 to Machynlleth	3228	159	1	0	3229	160	0.0%	0.3%

Dec-17

## ALL TRAFFIC IS TWO WAY DAILY FLOWS, ON MONTHLY TIME PERIODS

LINK INFORMATION		BASE NETWORK FLOWS		STMP FLOWS (BASE + DISTRIBUTED)		TOTAL FLOWS		% IMPACT	
LINK	LOCATION	AADT	HGV	AADT	HGV	AADT	HGV	AADT	HGV
1	A483 - FROM A5 TO A539 SOUTH OF WREXHAM	25575	2112	0	0	25575	2112	0.0%	0.0%
2	A5 - FROM A5 CHIRK TO A495 NORTH OF OSWESTRY	25302	2048	0	0	25302	2048	0.0%	0.0%
3	A5 - BETWEEN A483 & A495, EAST OF OSWESTRY	25691	2388	0	0	25691	2388	0.0%	0.0%
4	A5 - EAST OF A483 TOWARDS SHREWSBURY	19516	1310	0	0	19516	1310	0.0%	0.0%
5	A483 - FROM A495 TO A5	12631	1065	0	0	12631	1065	0.0%	0.0%
6	A483 - FROM A458 TO A495	8781	927	5	2	8786	929	0.1%	0.3%
7	A458 - FROM A483 TO SHREWSBURY - EAST OF WELSHPOOL	8135	678	5	2	8140	681	0.1%	0.4%
8	A483 - BETWEEN A458/A483 AND WELSHPOOL STATION	14583	1110	10	5	14593	1115	0.1%	0.4%
9	A458 - From A483 To B4392 - WELSHPOOL CENTRE	4645	258	10	5	4655	263	0.2%	1.9%
10	A458 - From B4392 To A495	4365	196	0	0	4365	196	0.0%	0.0%
11	A495 - FROM A458 TO A483, NORTH OF WELSHPOOL	3895	228	0	0	3895	228	0.0%	0.0%
12	A458 - FROM A495 TO B4395	4558	162	0	0	4558	162	0.0%	0.0%
13	A458 - FROM B4395 to A470	2653	114	0	0	2653	114	0.0%	0.0%
14	A483 - FROM WELSHPOOL TO NEWTOWN A489	10181	1222	20	10	10201	1232	0.2%	0.8%
15	A483 - FROM A489 TO A483 - NEWTOWN CENTRE	16781	1439	20	10	16801	1449	0.1%	0.7%
16	A489 - FROM A483 TO A470	7974	588	20	10	7994	598	0.2%	1.7%
17	A470 - BETWEEN A489 AND TALERDDIG	3498	418	40	20	3537	438	1.1%	4.7%
18	A470 - BETWEEN TALERDDIG AND CEMMAES	2118	248	2	1	2121	250	0.1%	0.4%
19	A470 - BETWEEN CEMMAES AND A458	2411	146	1	1	2412	147	0.0%	0.4%
21	A470 - FROM A489 TO B4518 LLANIDLOES	6269	511	2	1	6271	512	0.0%	0.2%
22	A489 - BETWEEN A483 NEWTOWN AND KERRY	2549	145	0	0	2549	145	0.0%	0.0%
24	A483 - BETWEEN A483/A489 IN NEWTOWN AND DOLFOR	2361	232	0	0	2361	232	0.0%	0.0%
25	A483 - FROM DOLFOR TO B4356	2759	156	0	0	2759	156	0.0%	0.0%
26	A483 - FROM B4356 TO A44	3079	178	0	0	3079	178	0.0%	0.0%
27	A44 - FROM A483 TO A488 CROSSGATES EAST	3856	224	0	0	3856	224	0.0%	0.0%
28	A44 - FROM A483 TO A470 - CROSSGATES WEST	1848	112	0	0	1848	112	0.0%	0.0%
29	A483 - FROM A44 TO A4081 - LLANDRINDOD WELLS	7425	305	0	0	7425	305	0.0%	0.0%
30	A483 - FROM A4081 TO A470 - LLANDRINDOD WELLS	8205	273	0	0	8205	273	0.0%	0.0%
31	B4392 - From A458 to A483 N of Welshpool	1472	147	0	0	1472	147	0.0%	0.0%
32	A470 - From A458 to Dolgellau	2144	81	1	1	2145	82	0.1%	0.7%
33	A489 - From A470 to Machynlleth	3228	159	1	1	3229	160	0.0%	0.3%

Jan-18

## ALL TRAFFIC IS TWO WAY DAILY FLOWS, ON MONTHLY TIME PERIODS

LINK INFORMATION		BASE NETWORK FLOWS		STMP FLOWS (BASE + DISTRIBUTED)		TOTAL FLOWS		% IMPACT	
LINK	LOCATION	AADT	HGV	AADT	HGV	AADT	HGV	AADT	HGV
1	A483 - FROM A5 TO A539 SOUTH OF WREXHAM	25859	2136	0	0	25859	2136	0.0%	0.0%
2	A5 - FROM A5 CHIRK TO A495 NORTH OF OSWESTRY	25583	2071	0	0	25583	2071	0.0%	0.0%
3	A5 - BETWEEN A483 & A495, EAST OF OSWESTRY	26133	2429	0	0	26133	2429	0.0%	0.0%
4	A5 - EAST OF A483 TOWARDS SHREWSBURY	19851	1333	0	0	19851	1333	0.0%	0.0%
5	A483 - FROM A495 TO A5	12848	1083	0	0	12848	1083	0.0%	0.0%
6	A483 - FROM A458 TO A495	8865	936	3	0	8868	936	0.0%	0.0%
7	A458 - FROM A483 TO SHREWSBURY - EAST OF WELSHPOOL	8213	685	3	0	8216	685	0.0%	0.1%
8	A483 - BETWEEN A458/A483 AND WELSHPOOL STATION	14723	1120	6	1	14729	1121	0.0%	0.1%
9	A458 - From A483 To B4392 - WELSHPOOL CENTRE	4690	260	6	1	4696	261	0.1%	0.3%
10	A458 - From B4392 To A495	4407	198	0	0	4407	198	0.0%	0.0%
11	A495 - FROM A458 TO A483, NORTH OF WELSHPOOL	3936	231	0	0	3936	231	0.0%	0.0%
12	A458 - FROM A495 TO B4395	4606	164	0	0	4606	164	0.0%	0.0%
13	A458 - FROM B4395 to A470	2681	115	0	0	2681	115	0.0%	0.0%
14	A483 - FROM WELSHPOOL TO NEWTOWN A489	10268	1232	12	2	10279	1234	0.1%	0.1%
15	A483 - FROM A489 TO A483 - NEWTOWN CENTRE	16923	1452	12	2	16935	1453	0.1%	0.1%
16	A489 - FROM A483 TO A470	8041	593	12	2	8053	595	0.1%	0.3%
17	A470 - BETWEEN A489 AND TALERDDIG	3534	422	23	4	3558	426	0.7%	0.9%
18	A470 - BETWEEN TALERDDIG AND CEMMAES	2141	251	1	0	2142	251	0.1%	0.1%
19	A470 - BETWEEN CEMMAES AND A458	2436	148	1	0	2436	148	0.0%	0.1%
21	A470 - FROM A489 TO B4518 LLANIDLOES	6332	516	1	0	6333	517	0.0%	0.0%
22	A489 - BETWEEN A483 NEWTOWN AND KERRY	2571	146	0	0	2571	146	0.0%	0.0%
24	A483 - BETWEEN A483/A489 IN NEWTOWN AND DOLFOR	2381	234	0	0	2381	234	0.0%	0.0%
25	A483 - FROM DOLFOR TO B4356	2788	158	0	0	2788	158	0.0%	0.0%
26	A483 - FROM B4356 TO A44	3111	180	0	0	3111	180	0.0%	0.0%
27	A44 - FROM A483 TO A488 CROSSGATES EAST	3896	227	0	0	3896	227	0.0%	0.0%
28	A44 - FROM A483 TO A470 - CROSSGATES WEST	1867	113	0	0	1867	113	0.0%	0.0%
29	A483 - FROM A44 TO A4081 - LLANDRINDOD WELLS	7501	309	0	0	7501	309	0.0%	0.0%
30	A483 - FROM A4081 TO A470 - LLANDRINDOD WELLS	8289	276	0	0	8289	276	0.0%	0.0%
31	B4392 - From A458 to A483 N of Welshpool	1488	149	0	0	1488	149	0.0%	0.0%
32	A470 - From A458 to Dolgellau	2166	82	1	0	2167	82	0.0%	0.1%
33	A489 - From A470 to Machynlleth	3262	161	1	0	3262	161	0.0%	0.1%

Feb-18

## ALL TRAFFIC IS TWO WAY DAILY FLOWS, ON MONTHLY TIME PERIODS

LINK INFORMATION		BASE NETWORK FLOWS		STMP FLOWS (BASE + DISTRIBUTED)		TOTAL FLOWS		% IMPACT	
LINK	LOCATION	AADT	HGV	AADT	HGV	AADT	HGV	AADT	HGV
1	A483 - FROM A5 TO A539 SOUTH OF WREXHAM	25859	2136	0	0	25859	2136	0.0%	0.0%
2	A5 - FROM A5 CHIRK TO A495 NORTH OF OSWESTRY	25583	2071	0	0	25583	2071	0.0%	0.0%
3	A5 - BETWEEN A483 & A495, EAST OF OSWESTRY	26133	2429	0	0	26133	2429	0.0%	0.0%
4	A5 - EAST OF A483 TOWARDS SHREWSBURY	19851	1333	0	0	19851	1333	0.0%	0.0%
5	A483 - FROM A495 TO A5	12848	1083	0	0	12848	1083	0.0%	0.0%
6	A483 - FROM A458 TO A495	8865	936	2	0	8867	936	0.0%	0.0%
7	A458 - FROM A483 TO SHREWSBURY - EAST OF WELSHPOOL	8213	685	2	0	8215	685	0.0%	0.1%
8	A483 - BETWEEN A458/A483 AND WELSHPOOL STATION	14723	1120	3	1	14727	1121	0.0%	0.1%
9	A458 - From A483 To B4392 - WELSHPOOL CENTRE	4690	260	3	1	4693	261	0.1%	0.3%
10	A458 - From B4392 To A495	4407	198	0	0	4407	198	0.0%	0.0%
11	A495 - FROM A458 TO A483, NORTH OF WELSHPOOL	3936	231	0	0	3936	231	0.0%	0.0%
12	A458 - FROM A495 TO B4395	4606	164	0	0	4606	164	0.0%	0.0%
13	A458 - FROM B4395 to A470	2681	115	0	0	2681	115	0.0%	0.0%
14	A483 - FROM WELSHPOOL TO NEWTOWN A489	10268	1232	7	2	10274	1234	0.1%	0.1%
15	A483 - FROM A489 TO A483 - NEWTOWN CENTRE	16923	1452	7	2	16930	1453	0.0%	0.1%
16	A489 - FROM A483 TO A470	8041	593	7	2	8048	595	0.1%	0.3%
17	A470 - BETWEEN A489 AND TALERDDIG	3534	422	14	4	3548	426	0.4%	0.9%
18	A470 - BETWEEN TALERDDIG AND CEMMAES	2141	251	1	0	2141	251	0.0%	0.1%
19	A470 - BETWEEN CEMMAES AND A458	2436	148	0	0	2436	148	0.0%	0.1%
21	A470 - FROM A489 TO B4518 LLANIDLOES	6332	516	1	0	6332	517	0.0%	0.0%
22	A489 - BETWEEN A483 NEWTOWN AND KERRY	2571	146	0	0	2571	146	0.0%	0.0%
24	A483 - BETWEEN A483/A489 IN NEWTOWN AND DOLFOR	2381	234	0	0	2381	234	0.0%	0.0%
25	A483 - FROM DOLFOR TO B4356	2788	158	0	0	2788	158	0.0%	0.0%
26	A483 - FROM B4356 TO A44	3111	180	0	0	3111	180	0.0%	0.0%
27	A44 - FROM A483 TO A488 CROSSGATES EAST	3896	227	0	0	3896	227	0.0%	0.0%
28	A44 - FROM A483 TO A470 - CROSSGATES WEST	1867	113	0	0	1867	113	0.0%	0.0%
29	A483 - FROM A44 TO A4081 - LLANDRINDOD WELLS	7501	309	0	0	7501	309	0.0%	0.0%
30	A483 - FROM A4081 TO A470 - LLANDRINDOD WELLS	8289	276	0	0	8289	276	0.0%	0.0%
31	B4392 - From A458 to A483 N of Welshpool	1488	149	0	0	1488	149	0.0%	0.0%
32	A470 - From A458 to Dolgellau	2166	82	0	0	2167	82	0.0%	0.1%
33	A489 - From A470 to Machynlleth	3262	161	0	0	3262	161	0.0%	0.1%



Mar-18

## ALL TRAFFIC IS TWO WAY DAILY FLOWS, ON MONTHLY TIME PERIODS

LINK INFORMATION		BASE NETWORK FLOWS		STMP FLOWS (BASE + DISTRIBUTED)		TOTAL FLOWS		% IMPACT	
LINK	LOCATION	AADT	HGV	AADT	HGV	AADT	HGV	AADT	HGV
1	A483 - FROM A5 TO A539 SOUTH OF WREXHAM	25859	2136	0	0	25859	2136	0.0%	0.0%
2	A5 - FROM A5 CHIRK TO A495 NORTH OF OSWESTRY	25583	2071	0	0	25583	2071	0.0%	0.0%
3	A5 - BETWEEN A483 & A495, EAST OF OSWESTRY	26133	2429	0	0	26133	2429	0.0%	0.0%
4	A5 - EAST OF A483 TOWARDS SHREWSBURY	19851	1333	0	0	19851	1333	0.0%	0.0%
5	A483 - FROM A495 TO A5	12848	1083	0	0	12848	1083	0.0%	0.0%
6	A483 - FROM A458 TO A495	8865	936	2	0	8867	936	0.0%	0.0%
7	A458 - FROM A483 TO SHREWSBURY - EAST OF WELSHPOOL	8213	685	2	0	8215	685	0.0%	0.1%
8	A483 - BETWEEN A458/A483 AND WELSHPOOL STATION	14723	1120	3	1	14727	1121	0.0%	0.1%
9	A458 - From A483 To B4392 - WELSHPOOL CENTRE	4690	260	3	1	4693	261	0.1%	0.3%
10	A458 - From B4392 To A495	4407	198	0	0	4407	198	0.0%	0.0%
11	A495 - FROM A458 TO A483, NORTH OF WELSHPOOL	3936	231	0	0	3936	231	0.0%	0.0%
12	A458 - FROM A495 TO B4395	4606	164	0	0	4606	164	0.0%	0.0%
13	A458 - FROM B4395 to A470	2681	115	0	0	2681	115	0.0%	0.0%
14	A483 - FROM WELSHPOOL TO NEWTOWN A489	10268	1232	7	2	10274	1234	0.1%	0.1%
15	A483 - FROM A489 TO A483 - NEWTOWN CENTRE	16923	1452	7	2	16930	1453	0.0%	0.1%
16	A489 - FROM A483 TO A470	8041	593	7	2	8048	595	0.1%	0.3%
17	A470 - BETWEEN A489 AND TALERDDIG	3534	422	14	4	3548	426	0.4%	0.9%
18	A470 - BETWEEN TALERDDIG AND CEMMAES	2141	251	1	0	2141	251	0.0%	0.1%
19	A470 - BETWEEN CEMMAES AND A458	2436	148	0	0	2436	148	0.0%	0.1%
21	A470 - FROM A489 TO B4518 LLANIDLOES	6332	516	1	0	6332	517	0.0%	0.0%
22	A489 - BETWEEN A483 NEWTOWN AND KERRY	2571	146	0	0	2571	146	0.0%	0.0%
24	A483 - BETWEEN A483/A489 IN NEWTOWN AND DOLFOR	2381	234	0	0	2381	234	0.0%	0.0%
25	A483 - FROM DOLFOR TO B4356	2788	158	0	0	2788	158	0.0%	0.0%
26	A483 - FROM B4356 TO A44	3111	180	0	0	3111	180	0.0%	0.0%
27	A44 - FROM A483 TO A488 CROSSGATES EAST	3896	227	0	0	3896	227	0.0%	0.0%
28	A44 - FROM A483 TO A470 - CROSSGATES WEST	1867	113	0	0	1867	113	0.0%	0.0%
29	A483 - FROM A44 TO A4081 - LLANDRINDOD WELLS	7501	309	0	0	7501	309	0.0%	0.0%
30	A483 - FROM A4081 TO A470 - LLANDRINDOD WELLS	8289	276	0	0	8289	276	0.0%	0.0%
31	B4392 - From A458 to A483 N of Welshpool	1488	149	0	0	1488	149	0.0%	0.0%
32	A470 - From A458 to Dolgellau	2166	82	0	0	2167	82	0.0%	0.1%
33	A489 - From A470 to Machynlleth	3262	161	0	0	3262	161	0.0%	0.1%

Apr-18

## ALL TRAFFIC IS TWO WAY DAILY FLOWS, ON MONTHLY TIME PERIODS

LINK INFORMATION		BASE NETWORK FLOWS		STMP FLOWS (BASE + DISTRIBUTED)		TOTAL FLOWS		% IMPACT	
LINK	LOCATION	AADT	HGV	AADT	HGV	AADT	HGV	AADT	HGV
1	A483 - FROM A5 TO A539 SOUTH OF WREXHAM	25859	2136	0	0	25859	2136	0.0%	0.0%
2	A5 - FROM A5 CHIRK TO A495 NORTH OF OSWESTRY	25583	2071	0	0	25583	2071	0.0%	0.0%
3	A5 - BETWEEN A483 & A495, EAST OF OSWESTRY	26133	2429	0	0	26133	2429	0.0%	0.0%
4	A5 - EAST OF A483 TOWARDS SHREWSBURY	19851	1333	0	0	19851	1333	0.0%	0.0%
5	A483 - FROM A495 TO A5	12848	1083	0	0	12848	1083	0.0%	0.0%
6	A483 - FROM A458 TO A495	8865	936	2	0	8867	936	0.0%	0.0%
7	A458 - FROM A483 TO SHREWSBURY - EAST OF WELSHPOOL	8213	685	2	0	8215	685	0.0%	0.1%
8	A483 - BETWEEN A458/A483 AND WELSHPOOL STATION	14723	1120	3	1	14727	1121	0.0%	0.1%
9	A458 - From A483 To B4392 - WELSHPOOL CENTRE	4690	260	3	1	4693	261	0.1%	0.3%
10	A458 - From B4392 To A495	4407	198	0	0	4407	198	0.0%	0.0%
11	A495 - FROM A458 TO A483, NORTH OF WELSHPOOL	3936	231	0	0	3936	231	0.0%	0.0%
12	A458 - FROM A495 TO B4395	4606	164	0	0	4606	164	0.0%	0.0%
13	A458 - FROM B4395 to A470	2681	115	0	0	2681	115	0.0%	0.0%
14	A483 - FROM WELSHPOOL TO NEWTOWN A489	10268	1232	7	2	10274	1234	0.1%	0.1%
15	A483 - FROM A489 TO A483 - NEWTOWN CENTRE	16923	1452	7	2	16930	1453	0.0%	0.1%
16	A489 - FROM A483 TO A470	8041	593	7	2	8048	595	0.1%	0.3%
17	A470 - BETWEEN A489 AND TALERDDIG	3534	422	14	4	3548	426	0.4%	0.9%
18	A470 - BETWEEN TALERDDIG AND CEMMAES	2141	251	1	0	2141	251	0.0%	0.1%
19	A470 - BETWEEN CEMMAES AND A458	2436	148	0	0	2436	148	0.0%	0.1%
21	A470 - FROM A489 TO B4518 LLANIDLOES	6332	516	1	0	6332	517	0.0%	0.0%
22	A489 - BETWEEN A483 NEWTOWN AND KERRY	2571	146	0	0	2571	146	0.0%	0.0%
24	A483 - BETWEEN A483/A489 IN NEWTOWN AND DOLFOR	2381	234	0	0	2381	234	0.0%	0.0%
25	A483 - FROM DOLFOR TO B4356	2788	158	0	0	2788	158	0.0%	0.0%
26	A483 - FROM B4356 TO A44	3111	180	0	0	3111	180	0.0%	0.0%
27	A44 - FROM A483 TO A488 CROSSGATES EAST	3896	227	0	0	3896	227	0.0%	0.0%
28	A44 - FROM A483 TO A470 - CROSSGATES WEST	1867	113	0	0	1867	113	0.0%	0.0%
29	A483 - FROM A44 TO A4081 - LLANDRINDOD WELLS	7501	309	0	0	7501	309	0.0%	0.0%
30	A483 - FROM A4081 TO A470 - LLANDRINDOD WELLS	8289	276	0	0	8289	276	0.0%	0.0%
31	B4392 - From A458 to A483 N of Welshpool	1488	149	0	0	1488	149	0.0%	0.0%
32	A470 - From A458 to Dolgellau	2166	82	0	0	2167	82	0.0%	0.1%
33	A489 - From A470 to Machynlleth	3262	161	0	0	3262	161	0.0%	0.1%

May-18

## ALL TRAFFIC IS TWO WAY DAILY FLOWS, ON MONTHLY TIME PERIODS

LINK INFORMATION		BASE NETWORK FLOWS		STMP FLOWS (BASE + DISTRIBUTED)		TOTAL FLOWS		% IMPACT	
LINK	LOCATION	AADT	HGV	AADT	HGV	AADT	HGV	AADT	HGV
1	A483 - FROM A5 TO A539 SOUTH OF WREXHAM	25859	2136	0	0	25859	2136	0.0%	0.0%
2	A5 - FROM A5 CHIRK TO A495 NORTH OF OSWESTRY	25583	2071	0	0	25583	2071	0.0%	0.0%
3	A5 - BETWEEN A483 & A495, EAST OF OSWESTRY	26133	2429	0	0	26133	2429	0.0%	0.0%
4	A5 - EAST OF A483 TOWARDS SHREWSBURY	19851	1333	0	0	19851	1333	0.0%	0.0%
5	A483 - FROM A495 TO A5	12848	1083	0	0	12848	1083	0.0%	0.0%
6	A483 - FROM A458 TO A495	8865	936	3	1	8868	937	0.0%	0.2%
7	A458 - FROM A483 TO SHREWSBURY - EAST OF WELSHPOOL	8213	685	3	1	8216	686	0.0%	0.2%
8	A483 - BETWEEN A458/A483 AND WELSHPOOL STATION	14723	1120	5	3	14729	1123	0.0%	0.3%
9	A458 - From A483 To B4392 - WELSHPOOL CENTRE	4690	260	5	3	4695	263	0.1%	1.1%
10	A458 - From B4392 To A495	4407	198	0	0	4407	198	0.0%	0.0%
11	A495 - FROM A458 TO A483, NORTH OF WELSHPOOL	3936	231	0	0	3936	231	0.0%	0.0%
12	A458 - FROM A495 TO B4395	4606	164	0	0	4606	164	0.0%	0.0%
13	A458 - FROM B4395 to A470	2681	115	0	0	2681	115	0.0%	0.0%
14	A483 - FROM WELSHPOOL TO NEWTOWN A489	10268	1232	11	6	10278	1238	0.1%	0.5%
15	A483 - FROM A489 TO A483 - NEWTOWN CENTRE	16923	1452	11	6	16934	1457	0.1%	0.4%
16	A489 - FROM A483 TO A470	8041	593	11	6	8052	599	0.1%	1.0%
17	A470 - BETWEEN A489 AND TALERDDIG	3534	422	22	12	3556	434	0.6%	2.8%
18	A470 - BETWEEN TALERDDIG AND CEMMAES	2141	251	1	1	2142	252	0.1%	0.3%
19	A470 - BETWEEN CEMMAES AND A458	2436	148	1	0	2436	148	0.0%	0.2%
21	A470 - FROM A489 TO B4518 LLANIDLOES	6332	516	1	1	6333	517	0.0%	0.1%
22	A489 - BETWEEN A483 NEWTOWN AND KERRY	2571	146	0	0	2571	146	0.0%	0.0%
24	A483 - BETWEEN A483/A489 IN NEWTOWN AND DOLFOR	2381	234	0	0	2381	234	0.0%	0.0%
25	A483 - FROM DOLFOR TO B4356	2788	158	0	0	2788	158	0.0%	0.0%
26	A483 - FROM B4356 TO A44	3111	180	0	0	3111	180	0.0%	0.0%
27	A44 - FROM A483 TO A488 CROSSGATES EAST	3896	227	0	0	3896	227	0.0%	0.0%
28	A44 - FROM A483 TO A470 - CROSSGATES WEST	1867	113	0	0	1867	113	0.0%	0.0%
29	A483 - FROM A44 TO A4081 - LLANDRINDOD WELLS	7501	309	0	0	7501	309	0.0%	0.0%
30	A483 - FROM A4081 TO A470 - LLANDRINDOD WELLS	8289	276	0	0	8289	276	0.0%	0.0%
31	B4392 - From A458 to A483 N of Welshpool	1488	149	0	0	1488	149	0.0%	0.0%
32	A470 - From A458 to Dolgellau	2166	82	1	0	2167	82	0.0%	0.4%
33	A489 - From A470 to Machynlleth	3262	161	1	0	3262	161	0.0%	0.2%

AVG 2016

ALL TRAFFIC IS TWO WAY DAILY FLOWS, ON MONTHLY TIME PERIODS

LINK INFORMATION		BASE NETWORK FLOWS		STMP FLOWS (BASE + DISTRIBUTED)		TOTAL FLOWS		% IMPACT	
LINK	LOCATION	AADT	HGV	AADT	HGV	AADT	HGV	AADT	HGV
1	A483 - FROM A5 TO A539 SOUTH OF WREXHAM	25006	2065	0	0	25006	2065	0.0%	0.0%
2	A5 - FROM A5 CHIRK TO A495 NORTH OF OSWESTRY	24739	2003	0	0	24739	2003	0.0%	0.0%
3	A5 - BETWEEN A483 & A495, EAST OF OSWESTRY	24874	2312	0	0	24874	2312	0.0%	0.0%
4	A5 - EAST OF A483 TOWARDS SHREWSBURY	18895	1269	0	0	18895	1269	0.0%	0.0%
5	A483 - FROM A495 TO A5	12229	1031	0	0	12229	1031	0.0%	0.0%
6	A483 - FROM A458 TO A495	8634	911	13	8	8647	920	0.2%	0.9%
7	A458 - FROM A483 TO SHREWSBURY - EAST OF WELSHPOOL	7999	667	13	8	8012	675	0.2%	1.2%
8	A483 - BETWEEN A458/A483 AND WELSHPOOL STATION	14340	1091	22	15	14362	1106	0.2%	1.3%
9	A458 - From A483 To B4392 - WELSHPOOL CENTRE	4568	253	24	16	4592	269	0.5%	6.2%
10	A458 - From B4392 To A495	4292	193	0	0	4292	193	0.0%	0.0%
11	A495 - FROM A458 TO A483, NORTH OF WELSHPOOL	3825	224	0	0	3825	224	0.0%	0.0%
12	A458 - FROM A495 TO B4395	4477	159	0	0	4477	159	0.0%	0.0%
13	A458 - FROM B4395 to A470	2605	112	0	0	2605	112	0.0%	0.0%
14	A483 - FROM WELSHPOOL TO NEWTOWN A489	10039	1205	50	32	10089	1237	0.5%	2.7%
15	A483 - FROM A489 TO A483 - NEWTOWN CENTRE	16546	1419	59	38	16606	1458	0.4%	2.7%
16	A489 - FROM A483 TO A470	7862	580	63	40	7925	620	0.8%	6.9%
17	A470 - BETWEEN A489 AND TALERDDIG	3435	410	59	41	3494	451	1.7%	9.9%
18	A470 - BETWEEN TALERDDIG AND CEMMAES	2080	244	3	2	2084	246	0.2%	0.9%
19	A470 - BETWEEN CEMMAES AND A458	2367	143	2	1	2369	145	0.1%	0.8%
21	A470 - FROM A489 TO B4518 LLANIDLOES	6160	502	3	2	6163	505	0.1%	0.4%
22	A489 - BETWEEN A483 NEWTOWN AND KERRY	2513	143	10	5	2523	148	0.4%	3.5%
24	A483 - BETWEEN A483/A489 IN NEWTOWN AND DOLFOR	2328	229	5	3	2333	232	0.2%	1.1%
25	A483 - FROM DOLFOR TO B4356	2710	153	25	13	2735	166	0.9%	8.2%
26	A483 - FROM B4356 TO A44	3024	175	5	3	3029	178	0.2%	1.4%
27	A44 - FROM A483 TO A488 CROSSGATES EAST	3788	220	2	1	3789	221	0.0%	0.4%
28	A44 - FROM A483 TO A470 - CROSSGATES WEST	1815	110	2	1	1816	110	0.1%	0.8%
29	A483 - FROM A44 TO A4081 - LLANDRINDOD WELLS	7292	300	2	1	7294	301	0.0%	0.3%
30	A483 - FROM A4081 TO A470 - LLANDRINDOD WELLS	8059	268	0	0	8059	268	0.0%	0.0%
31	B4392 - From A458 to A483 N of Welshpool	1446	144	0	0	1446	144	0.0%	0.0%
32	A470 - From A458 to Dolgellau	2105	80	2	1	2107	81	0.1%	1.4%
33	A489 - From A470 to Machynlleth	3170	156	2	1	3172	157	0.1%	0.7%

AVG 2017

ALL TRAFFIC IS TWO WAY DAILY FLOWS, ON MONTHLY TIME PERIODS

LINK INFORMATION		BASE NETWORK FLOWS		STMP FLOWS (BASE + DISTRIBUTED)		TOTAL FLOWS		% IMPACT	
LINK	LOCATION	AADT	HGV	AADT	HGV	AADT	HGV	AADT	HGV
1	A483 - FROM A5 TO A539 SOUTH OF WREXHAM	25291	2089	0	0	25291	2089	0.0%	0.0%
2	A5 - FROM A5 CHIRK TO A495 NORTH OF OSWESTRY	25021	2026	0	0	25021	2026	0.0%	0.0%
3	A5 - BETWEEN A483 & A495, EAST OF OSWESTRY	25252	2347	0	0	25252	2347	0.0%	0.0%
4	A5 - EAST OF A483 TOWARDS SHREWSBURY	19182	1288	0	0	19182	1288	0.0%	0.0%
5	A483 - FROM A495 TO A5	12415	1047	0	0	12415	1047	0.0%	0.0%
6	A483 - FROM A458 TO A495	8696	918	10	8	8706	926	0.1%	0.9%
7	A458 - FROM A483 TO SHREWSBURY - EAST OF WELSHPOOL	8056	672	10	8	8067	680	0.1%	1.2%
8	A483 - BETWEEN A458/A483 AND WELSHPOOL STATION	14442	1099	21	16	14463	1115	0.1%	1.5%
9	A458 - From A483 To B4392 - WELSHPOOL CENTRE	4600	255	21	16	4621	271	0.5%	6.3%
10	A458 - From B4392 To A495	4323	194	0	0	4323	194	0.0%	0.0%
11	A495 - FROM A458 TO A483, NORTH OF WELSHPOOL	3854	226	0	0	3854	226	0.0%	0.0%
12	A458 - FROM A495 TO B4395	4510	161	0	0	4510	161	0.0%	0.0%
13	A458 - FROM B4395 to A470	2625	112	0	0	2625	112	0.0%	0.0%
14	A483 - FROM WELSHPOOL TO NEWTOWN A489	10094	1211	42	32	10136	1243	0.4%	2.6%
15	A483 - FROM A489 TO A483 - NEWTOWN CENTRE	16637	1427	42	32	16679	1459	0.3%	2.2%
16	A489 - FROM A483 TO A470	7905	583	42	32	7947	615	0.5%	5.5%
17	A470 - BETWEEN A489 AND TALERDDIG	3461	413	84	64	3544	477	2.4%	15.4%
18	A470 - BETWEEN TALERDDIG AND CEMMAES	2096	246	5	4	2101	249	0.2%	1.4%
19	A470 - BETWEEN CEMMAES AND A458	2385	144	2	2	2387	146	0.1%	1.2%
21	A470 - FROM A489 TO B4518 LLANIDLOES	6206	506	5	4	6211	510	0.1%	0.7%
22	A489 - BETWEEN A483 NEWTOWN AND KERRY	2527	144	0	0	2527	144	0.0%	0.0%
24	A483 - BETWEEN A483/A489 IN NEWTOWN AND DOLFOR	2341	230	0	0	2341	230	0.0%	0.0%
25	A483 - FROM DOLFOR TO B4356	2730	155	0	0	2730	155	0.0%	0.0%
26	A483 - FROM B4356 TO A44	3046	177	0	0	3046	177	0.0%	0.0%
27	A44 - FROM A483 TO A488 CROSSGATES EAST	3817	222	0	0	3817	222	0.0%	0.0%
28	A44 - FROM A483 TO A470 - CROSSGATES WEST	1829	110	0	0	1829	110	0.0%	0.0%
29	A483 - FROM A44 TO A4081 - LLANDRINDOD WELLS	7349	302	0	0	7349	302	0.0%	0.0%
30	A483 - FROM A4081 TO A470 - LLANDRINDOD WELLS	8121	270	0	0	8121	270	0.0%	0.0%
31	B4392 - From A458 to A483 N of Welshpool	1457	145	0	0	1457	145	0.0%	0.0%
32	A470 - From A458 to Dolgellau	2121	80	2	2	2124	82	0.1%	2.2%
33	A489 - From A470 to Machynlleth	3194	158	2	2	3196	159	0.1%	1.1%

AVG 2018

ALL TRAFFIC IS TWO WAY DAILY FLOWS, ON MONTHLY TIME PERIODS

LINK INFORMATION		BASE NETWORK FLOWS		STMP FLOWS (BASE + DISTRIBUTED)		TOTAL FLOWS		% IMPACT	
LINK	LOCATION	AADT	HGV	AADT	HGV	AADT	HGV	AADT	HGV
1	A483 - FROM A5 TO A539 SOUTH OF WREXHAM	25575	2112	0	0	25575	2112	0.0%	0.0%
2	A5 - FROM A5 CHIRK TO A495 NORTH OF OSWESTRY	25302	2048	0	0	25302	2048	0.0%	0.0%
3	A5 - BETWEEN A483 & A495, EAST OF OSWESTRY	25691	2388	0	0	25691	2388	0.0%	0.0%
4	A5 - EAST OF A483 TOWARDS SHREWSBURY	19516	1310	0	0	19516	1310	0.0%	0.0%
5	A483 - FROM A495 TO A5	12631	1065	0	0	12631	1065	0.0%	0.0%
6	A483 - FROM A458 TO A495	8781	927	1	0	8782	927	0.0%	0.0%
7	A458 - FROM A483 TO SHREWSBURY - EAST OF WELSHPOOL	8135	678	1	0	8136	678	0.0%	0.0%
8	A483 - BETWEEN A458/A483 AND WELSHPOOL STATION	14583	1110	2	1	14585	1110	0.0%	0.0%
9	A458 - From A483 To B4392 - WELSHPOOL CENTRE	4645	258	2	1	4647	258	0.0%	0.2%
10	A458 - From B4392 To A495	4365	196	0	0	4365	196	0.0%	0.0%
11	A495 - FROM A458 TO A483, NORTH OF WELSHPOOL	3895	228	0	0	3895	228	0.0%	0.0%
12	A458 - FROM A495 TO B4395	4558	162	0	0	4558	162	0.0%	0.0%
13	A458 - FROM B4395 to A470	2653	114	0	0	2653	114	0.0%	0.0%
14	A483 - FROM WELSHPOOL TO NEWTOWN A489	10181	1222	4	1	10185	1223	0.0%	0.1%
15	A483 - FROM A489 TO A483 - NEWTOWN CENTRE	16781	1439	4	1	16784	1440	0.0%	0.1%
16	A489 - FROM A483 TO A470	7974	588	4	1	7977	589	0.0%	0.2%
17	A470 - BETWEEN A489 AND TALERDDIG	3498	418	7	2	3505	420	0.2%	0.5%
18	A470 - BETWEEN TALERDDIG AND CEMMAES	2118	248	0	0	2119	249	0.0%	0.0%
19	A470 - BETWEEN CEMMAES AND A458	2411	146	0	0	2411	146	0.0%	0.0%
21	A470 - FROM A489 TO B4518 LLANIDLOES	6269	511	0	0	6269	511	0.0%	0.0%
22	A489 - BETWEEN A483 NEWTOWN AND KERRY	2549	145	0	0	2549	145	0.0%	0.0%
24	A483 - BETWEEN A483/A489 IN NEWTOWN AND DOLFOR	2361	232	0	0	2361	232	0.0%	0.0%
25	A483 - FROM DOLFOR TO B4356	2759	156	0	0	2759	156	0.0%	0.0%
26	A483 - FROM B4356 TO A44	3079	178	0	0	3079	178	0.0%	0.0%
27	A44 - FROM A483 TO A488 CROSSGATES EAST	3856	224	0	0	3856	224	0.0%	0.0%
28	A44 - FROM A483 TO A470 - CROSSGATES WEST	1848	112	0	0	1848	112	0.0%	0.0%
29	A483 - FROM A44 TO A4081 - LLANDRINDOD WELLS	7425	305	0	0	7425	305	0.0%	0.0%
30	A483 - FROM A4081 TO A470 - LLANDRINDOD WELLS	8205	273	0	0	8205	273	0.0%	0.0%
31	B4392 - From A458 to A483 N of Welshpool	1472	147	0	0	1472	147	0.0%	0.0%
32	A470 - From A458 to Dolgellau	2144	81	0	0	2144	81	0.0%	0.1%
33	A489 - From A470 to Machynlleth	3228	159	0	0	3228	159	0.0%	0.0%

---

**Appendix B – Llanbrynmair Impact Percentage**











IMPACT MATRICES - BY YEAR / LINK / TRAFFIC  
17/12/2013

ALL TRAFFIC (AADT) INCREASE - ALL YEARS		AVG 2015	AVG 2016	AVG 2017	AVG 2018	AVG 2019	AVG 2020	AVG 2021	AVG 2022
LINK	LOCATION								
1	A483 - FROM A5 TO A539 SOUTH OF WREXHAM	0.1%	0.0%	0.0%	0.0%	0.0%	0.0%	0.0%	0.0%
2	A5 - FROM A5 CHIRK TO A495 NORTH OF OSWESTRY	0.1%	0.0%	0.0%	0.0%	0.0%	0.0%	0.0%	0.0%
3	A5 - BETWEEN A483 & A495, EAST OF OSWESTRY	0.1%	0.0%	0.0%	0.0%	0.0%	0.0%	0.0%	0.0%
4	A5 - EAST OF A483 TOWARDS SHREWSBURY	0.0%	0.0%	0.0%	0.0%	0.0%	0.0%	0.0%	0.0%
5	A483 - FROM A495 TO A5	0.1%	0.0%	0.0%	0.0%	0.0%	0.0%	0.0%	0.0%
6	A483 - FROM A458 TO A495	0.3%	0.2%	0.1%	0.0%	0.0%	0.0%	0.0%	0.0%
7	A458 - FROM A483 TO SHREWSBURY - EAST OF WELSHPOOL	0.3%	0.2%	0.1%	0.0%	0.0%	0.0%	0.0%	0.0%
8	A483 - BETWEEN A458/A483 AND WELSHPOOL STATION	0.2%	0.2%	0.1%	0.0%	0.0%	0.0%	0.0%	0.0%
9	A458 - From A483 To B4392 - WELSHPOOL CENTRE	0.8%	0.5%	0.5%	0.0%	0.0%	0.0%	0.0%	0.0%
10	A458 - From B4392 To A495	0.6%	0.0%	0.0%	0.0%	0.0%	0.0%	0.0%	0.0%
11	A495 - FROM A458 TO A483, NORTH OF WELSHPOOL	0.1%	0.0%	0.0%	0.0%	0.0%	0.0%	0.0%	0.0%
12	A458 - FROM A495 TO B4395	0.4%	0.0%	0.0%	0.0%	0.0%	0.0%	0.0%	0.0%
13	A458 - FROM B4395 TO A470	0.1%	0.0%	0.0%	0.0%	0.0%	0.0%	0.0%	0.0%
14	A483 - FROM WELSHPOOL TO NEWTOWN A489	0.4%	0.5%	0.4%	0.0%	0.0%	0.0%	0.0%	0.0%
15	A483 - FROM A489 TO A483 - NEWTOWN CENTRE	0.3%	0.4%	0.3%	0.0%	0.0%	0.0%	0.0%	0.0%
16	A489 - FROM A483 TO A470	0.4%	0.8%	0.5%	0.0%	0.0%	0.0%	0.0%	0.0%
17	A470 - BETWEEN A489 AND TALERDDIG	0.2%	1.7%	2.4%	0.2%	0.0%	0.0%	0.0%	0.0%
18	A470 - BETWEEN TALERDDIG AND CEMMAES	0.6%	0.2%	0.2%	0.0%	0.0%	0.0%	0.0%	0.0%
19	A470 - BETWEEN CEMMAES AND A458	0.1%	0.1%	0.1%	0.0%	0.0%	0.0%	0.0%	0.0%
21	A470 - FROM A489 TO B4518 LLANDLOES	0.0%	0.1%	0.1%	0.0%	0.0%	0.0%	0.0%	0.0%
22	A489 - BETWEEN A483 NEWTOWN AND KERRY	0.5%	0.4%	0.0%	0.0%	0.0%	0.0%	0.0%	0.0%
24	A483 - BETWEEN A483/A489 IN NEWTOWN AND DOLFOR	0.0%	0.2%	0.0%	0.0%	0.0%	0.0%	0.0%	0.0%
25	A483 - FROM DOLFOR TO B4356	0.0%	0.9%	0.0%	0.0%	0.0%	0.0%	0.0%	0.0%
26	A483 - FROM B4356 TO A44	0.0%	0.2%	0.0%	0.0%	0.0%	0.0%	0.0%	0.0%
27	A44 - FROM A483 TO A488 CROSSGATES EAST	0.0%	0.0%	0.0%	0.0%	0.0%	0.0%	0.0%	0.0%
28	A44 - FROM A483 TO A470 - CROSSGATES WEST	0.0%	0.1%	0.0%	0.0%	0.0%	0.0%	0.0%	0.0%
29	A483 - FROM A44 TO A4081 - LLANDRINDOD WELLS	0.0%	0.0%	0.0%	0.0%	0.0%	0.0%	0.0%	0.0%
30	A483 - FROM A4081 TO A470 - LLANDRINDOD WELLS	0.0%	0.0%	0.0%	0.0%	0.0%	0.0%	0.0%	0.0%
31	B4392 - From A458 to A483 N of Welshpool	0.0%	0.0%	0.0%	0.0%	0.0%	0.0%	0.0%	0.0%
32	A470 - From A458 to Dolgellau	0.2%	0.1%	0.1%	0.0%	0.0%	0.0%	0.0%	0.0%
33	A489 - From A470 to Machynlleth	0.1%	0.1%	0.1%	0.0%	0.0%	0.0%	0.0%	0.0%

HGV TRAFFIC INCREASE - ALL YEARS		AVG 2015	AVG 2016	AVG 2017	AVG 2018	AVG 2019	AVG 2020	AVG 2021	AVG 2022
LINK	LOCATION								
1	A483 - FROM A5 TO A539 SOUTH OF WREXHAM	0.2%	0.0%	0.0%	0.0%	0.0%	0.0%	0.0%	0.0%
2	A5 - FROM A5 CHIRK TO A495 NORTH OF OSWESTRY	0.2%	0.0%	0.0%	0.0%	0.0%	0.0%	0.0%	0.0%
3	A5 - BETWEEN A483 & A495, EAST OF OSWESTRY	0.3%	0.0%	0.0%	0.0%	0.0%	0.0%	0.0%	0.0%
4	A5 - EAST OF A483 TOWARDS SHREWSBURY	0.2%	0.0%	0.0%	0.0%	0.0%	0.0%	0.0%	0.0%
5	A483 - FROM A495 TO A5	0.5%	0.0%	0.0%	0.0%	0.0%	0.0%	0.0%	0.0%
6	A483 - FROM A458 TO A495	1.2%	0.9%	0.9%	0.0%	0.0%	0.0%	0.0%	0.0%
7	A458 - FROM A483 TO SHREWSBURY - EAST OF WELSHPOOL	1.7%	1.2%	1.2%	0.0%	0.0%	0.0%	0.0%	0.0%
8	A483 - BETWEEN A458/A483 AND WELSHPOOL STATION	1.3%	1.3%	1.5%	0.0%	0.0%	0.0%	0.0%	0.0%
9	A458 - From A483 To B4392 - WELSHPOOL CENTRE	6.4%	6.2%	6.3%	0.2%	0.0%	0.0%	0.0%	0.0%
10	A458 - From B4392 To A495	5.5%	0.0%	0.0%	0.0%	0.0%	0.0%	0.0%	0.0%
11	A495 - FROM A458 TO A483, NORTH OF WELSHPOOL	0.8%	0.0%	0.0%	0.0%	0.0%	0.0%	0.0%	0.0%
12	A458 - FROM A495 TO B4395	4.5%	0.0%	0.0%	0.0%	0.0%	0.0%	0.0%	0.0%
13	A458 - FROM B4395 TO A470	0.9%	0.0%	0.0%	0.0%	0.0%	0.0%	0.0%	0.0%
14	A483 - FROM WELSHPOOL TO NEWTOWN A489	1.7%	2.7%	2.6%	0.1%	0.0%	0.0%	0.0%	0.0%
15	A483 - FROM A489 TO A483 - NEWTOWN CENTRE	1.9%	2.7%	2.2%	0.1%	0.0%	0.0%	0.0%	0.0%
16	A489 - FROM A483 TO A470	3.3%	6.9%	5.5%	0.2%	0.0%	0.0%	0.0%	0.0%
17	A470 - BETWEEN A489 AND TALERDDIG	0.7%	9.9%	15.4%	0.5%	0.0%	0.0%	0.0%	0.0%
18	A470 - BETWEEN TALERDDIG AND CEMMAES	2.3%	0.9%	1.4%	0.0%	0.0%	0.0%	0.0%	0.0%
19	A470 - BETWEEN CEMMAES AND A458	1.0%	0.8%	1.2%	0.0%	0.0%	0.0%	0.0%	0.0%
21	A470 - FROM A489 TO B4518 LLANDLOES	0.1%	0.4%	0.7%	0.0%	0.0%	0.0%	0.0%	0.0%
22	A489 - BETWEEN A483 NEWTOWN AND KERRY	3.3%	3.5%	0.0%	0.0%	0.0%	0.0%	0.0%	0.0%
24	A483 - BETWEEN A483/A489 IN NEWTOWN AND DOLFOR	0.0%	1.1%	0.0%	0.0%	0.0%	0.0%	0.0%	0.0%
25	A483 - FROM DOLFOR TO B4356	0.0%	8.2%	0.0%	0.0%	0.0%	0.0%	0.0%	0.0%
26	A483 - FROM B4356 TO A44	0.0%	1.4%	0.0%	0.0%	0.0%	0.0%	0.0%	0.0%
27	A44 - FROM A483 TO A488 CROSSGATES EAST	0.0%	0.4%	0.0%	0.0%	0.0%	0.0%	0.0%	0.0%
28	A44 - FROM A483 TO A470 - CROSSGATES WEST	0.0%	0.8%	0.0%	0.0%	0.0%	0.0%	0.0%	0.0%
29	A483 - FROM A44 TO A4081 - LLANDRINDOD WELLS	0.0%	0.3%	0.0%	0.0%	0.0%	0.0%	0.0%	0.0%
30	A483 - FROM A4081 TO A470 - LLANDRINDOD WELLS	0.0%	0.0%	0.0%	0.0%	0.0%	0.0%	0.0%	0.0%
31	B4392 - From A458 to A483 N of Welshpool	0.0%	0.0%	0.0%	0.0%	0.0%	0.0%	0.0%	0.0%
32	A470 - From A458 to Dolgellau	1.8%	1.4%	2.2%	0.1%	0.0%	0.0%	0.0%	0.0%
33	A489 - From A470 to Machynlleth	0.9%	0.7%	1.1%	0.0%	0.0%	0.0%	0.0%	0.0%

KEY  
 3.0% <10% increase  
 11.3% 10%-30% increase  
 50.0% >30% increase