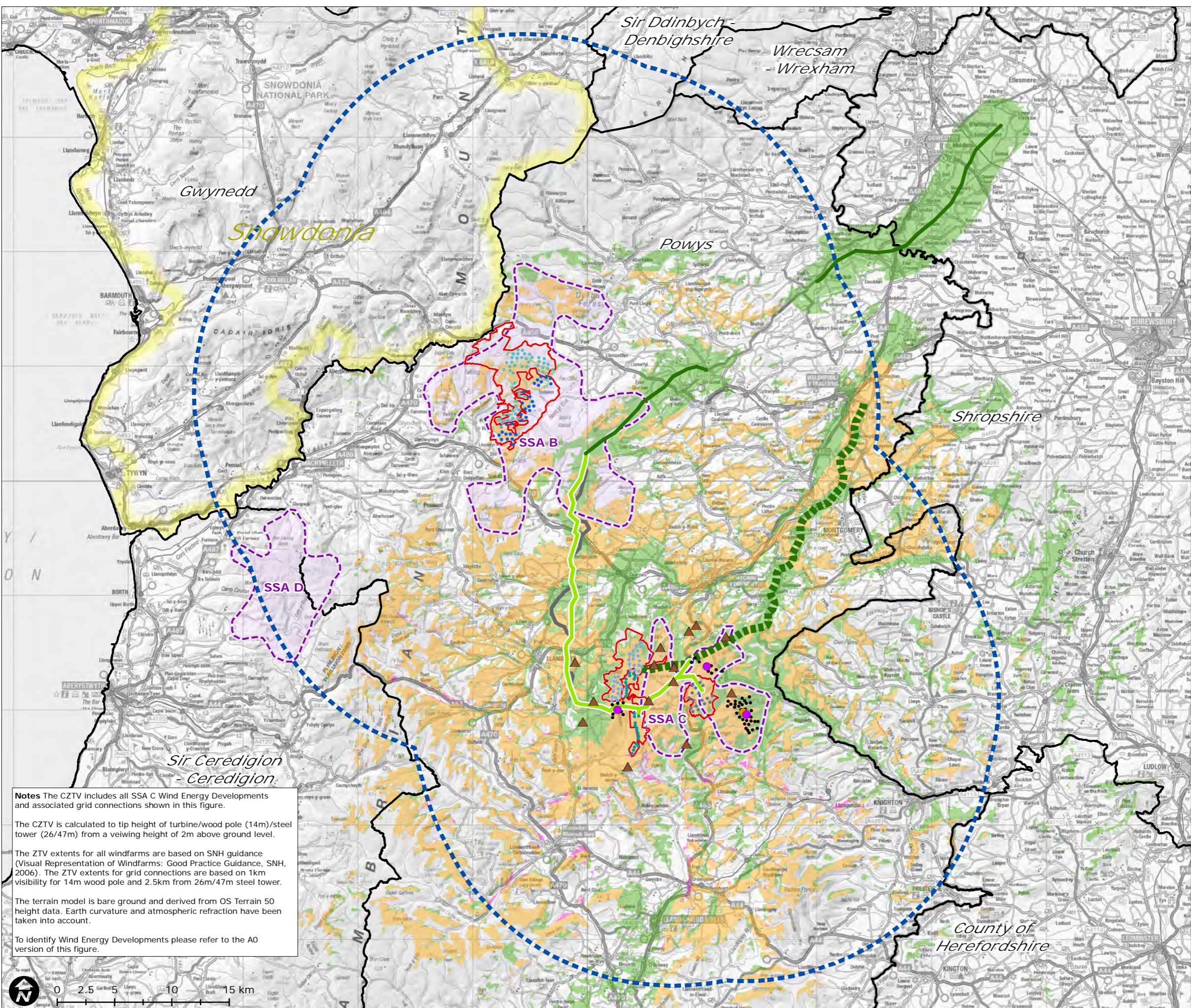


The Mid-Wales (Powys) Conjoined Wind Farms Public Inquiry

Supplementary Environmental Information (SEI): Conjoined Cumulative Landscape and Visual - Graphics and Visualisations

Cumulative Zone of Theoretical Visibility (CZTV): Llaithddu Wind Farm and all Operational, Consented and Proposed SSA-C Wind Energy Developments and Proposed Grid Connections

- Wind Farm Application Boundaries
- 5 PLI Schemes - Turbine Locations**
 - Llanbrynmair, 30 turbines, 126.5m to tip
 - Carnedd Wen, 50 turbines, 137m to tip
 - Llandinam Repowering, 34 turbines, up to 121.2m to tip
 - Llanbadarn Fynydd, 17 turbines, 125m to tip
 - Llaithddu, 27 turbines, up to 115.5m to tip
- TAN 8 (SSA B, SSA C) 20km Study Area
- TAN 8 Strategic Search Areas (SSAs)
- Snowdonia National Park
- Planning Authority Boundary
- SPEN Proposed Grid Connection Network**
 - CC 1-4 - 132kV/33kV Single Circuit Wood Pole Line
 - Alternative Line Route Options
- National Grid Proposed Grid Connection Network**
 - 400kV Draft National Grid Route - Overhead
- Llandinam Proposed Grid Connection**
 - 132kV Proposed Llandinam Overhead Line Connection
- Wind Energy Development Status**
 - ● Appeal/Public Inquiry
 - ● Application Submitted
 - ▲ FIT Scheme
 - ● Turbine Location
- Theoretical Visibility**
 - SSA C Wind Energy Developments and Grid Connections
 - Llaithddu
 - Llaithddu, SSA C Wind Energy Developments and Grid Connections



Notes The CZTV includes all SSA C Wind Energy Developments and associated grid connections shown in this figure.

The CZTV is calculated to tip height of turbine/wood pole (14m)/steel tower (26/47m) from a viewing height of 2m above ground level.

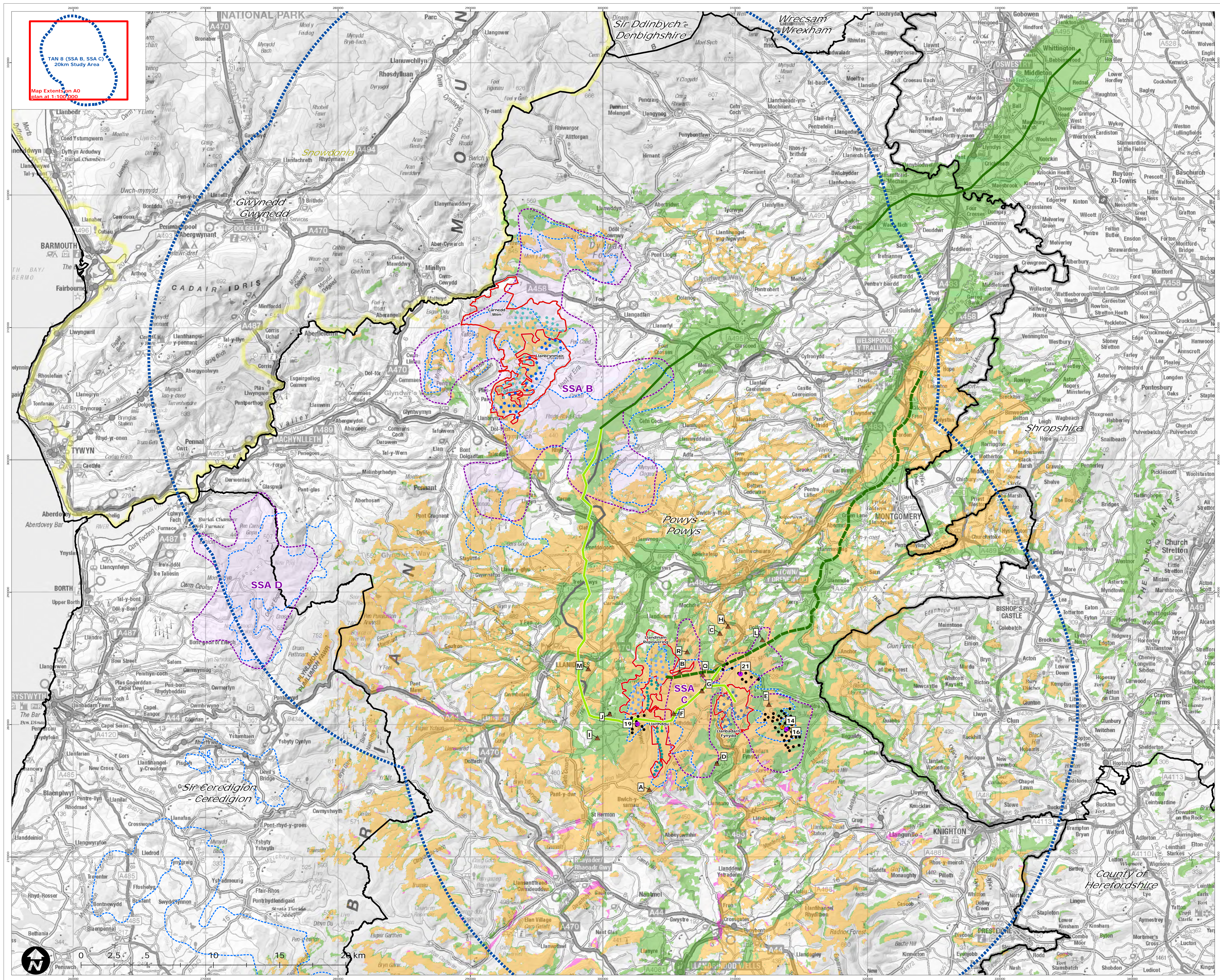
The ZTV extents for all windfarms are based on SNH guidance (Visual Representation of Windfarms: Good Practice Guidance, SNH, 2006). The ZTV extents for grid connections are based on 1km visibility for 14m wood pole and 2.5km from 26m/47m steel tower.

The terrain data is bare ground and derived from OS Terrain 50 height data. Earth curvature and atmospheric refraction have been taken into account.

To identify Wind Energy Developments please refer to the A0 version of this figure.

Figure 10
Map Scale @ A3:1:325,000





The Mid-Wales (Powys) Conjoined Wind Farms Public Inquiry
 Supplementary Environmental Information (SEI): Conjoined Cumulative Landscape and Visual - Graphics and Visualisations

Cumulative Zone of Theoretical Visibility (CZTV): Llaihddu Wind Farm and all Operational, Consented and Proposed SSA-C Wind Energy Developments and Proposed Grid Connections

- Wind Farm Application Boundaries
- 5 PLI Schemes - Turbine Locations**
 - Llanbrynmair, 30 turbines, 126.5m to tip
 - Carnedd Wen, 50 turbines, 137m to tip
 - Llandnam Repowering, 34 turbines, up to 121.2m to tip
 - Llanbadarn Fynydd, 17 turbines, 125m to tip
 - Llaihddu, 27 turbines, up to 115.5m to tip
- TAN 8 (SSA B, SSA C) 20km Study Area
- TAN 8 Strategic Search Areas (SSA) (July 2005)
- TAN 8 Strategic Search Areas (SSA) (PCC Redefined)
- Snowdonia National Park
- Planning Authority Boundary
- SPEN Proposed Grid Connection Network**
 - CC 1-4 - 132kV/33kV Single Circuit Wood Pole Line
 - Alternative Line Route Options
- National Grid Proposed Grid Connection Network**
 - 400kV Draft National Grid Route - Overhead
- Llandnam Proposed Grid Connection**
 - 132kV Proposed Llandnam Overhead Line Connection
- Wind Energy Development Status**
 - ● Appeal/Public Inquiry
 - ● Application Submitted
 - ▲ FIT Scheme
 - ● Turbine Location

- Wind Farms at Appeal/PLI**
 - 14. Garreg Lywd Hill, 23 turbines, 126.5m to tip
- Wind Farms with Application Submitted**
 - 16. Bryngydfa, 12 turbines, 126.5m to tip
 - 19. Hirdwywell, 9 turbines, 125m to tip
 - 21. Neuadd Goch Bank, 9 turbines, 126m to tip
- FIT Schemes within 5km of 5 PLI Wind Farms**
 - A. Bailey Bog, 1 turbine, 20.4m to tip, Consented
 - B. Bryn Dadlau, 1 turbine, 19.5m to tip, Consented
 - C. Bryn Davach Fich, 1 turbine, 17.7m to tip, Consented
 - D. Brynddu, 2 turbines, 20.4m to tip, Consented
 - E. Brynmawr Cottage, 1 turbine, 17.7m to tip, Consented
 - F. Ddudley Bank, 1 turbine, 20m to tip, Consented
 - G. Esgairdraenllwyn, 2 turbines, 34.6m to tip, Consented
 - H. Garreg, 1 turbine, 26m to tip, Consented
 - I. Garth Fawr, 1 turbine, 20.9m to tip, Consented
 - J. Hafod Fraith, 2 turbines, 17.7m to tip, Consented
 - L. Lower Ceulannau, 1 turbine, 17.7m to tip, Consented
 - M. New Chapel Farm, 1 turbine, 17.7m to tip, Consented
 - O. Bryn Cwmrhewdre, 1 turbine, 34.4m to tip, Application Submitted
 - R. Dugwm Farm, 1 turbine, 34.4m to tip, Application Submitted

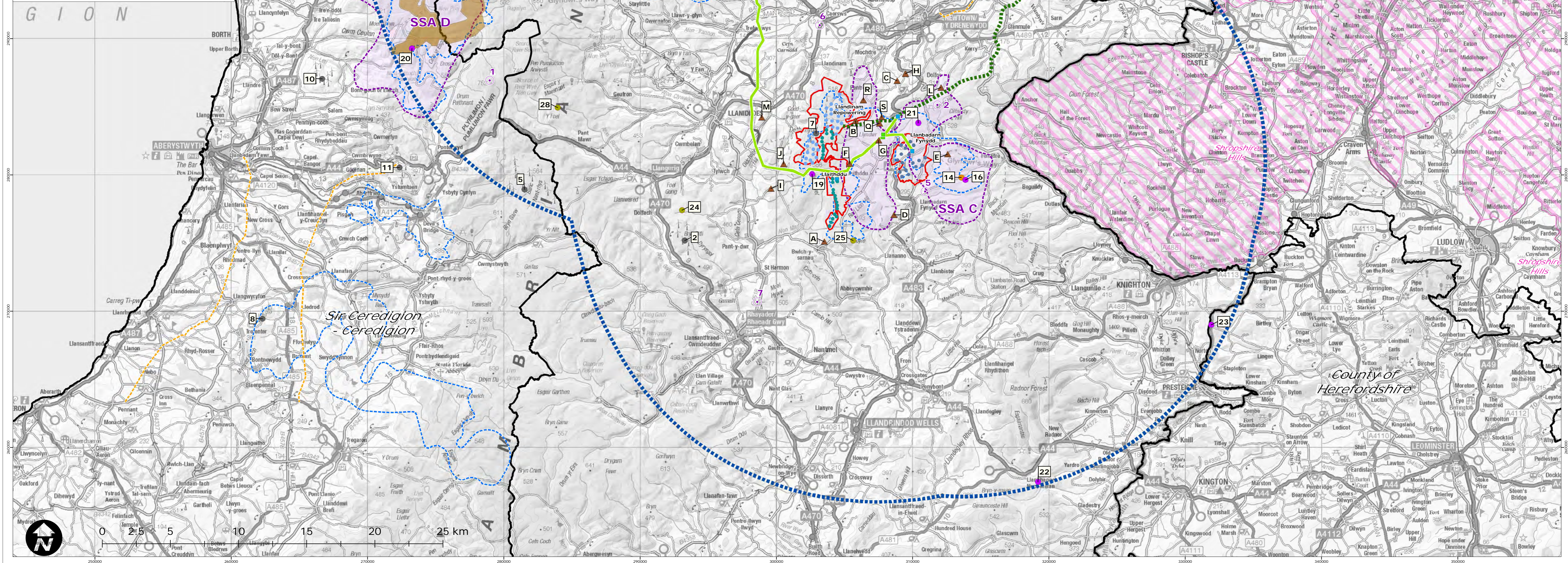
- Theoretical Visibility**
 - SSA C Wind Energy Developments and Grid Connections
 - Llaihddu
 - Llaihddu, SSA C Wind Energy Developments and Grid Connections

Notes The CZTV includes all SSA C Wind Energy Developments and associated grid connections shown in this figure.
 The CZTV is calculated to tip height of turbine/wood pole (14m)/steel tower (26/47m) from a viewing height of 2m above ground level.
 The ZTV extents for all windfarms are based on SNH guidance (Visual Representation of Windfarms: Good Practice Guidance, SNH, 2006). The ZTV extents for grid connections are based on 1km visibility for 14m wood pole and 2.5km from 26m/47m steel tower.
 The terrain model is bare ground and derived from OS Terrain 50 height data. Earth curvature and atmospheric refraction have been taken into account.

Figure 10a
 Map Scale @ A0: 1:100,000



- Wind Energy Development Status**
- Operational
 - Consented
 - Appeal/Public Inquiry
 - Application Submitted
 - Design/Scoping
 - FIT Scheme
 - Turbine Location
- Operational Wind Farms**
1. Braich Ddu Farm, 3 turbines, 90m to tip
 2. Bryn Tili, 22 turbines, 48.5m to tip
 3. Carno I, 56 turbines, 54m to tip
 4. Carno II, 12 turbines, 80m to tip
 5. Cefn Croes, 39 turbines, 100m to tip
 6. Cemmaes 2, 18 turbines, 66m to tip
 7. Llandinam, 103 turbines, 45.5m to tip
 8. Llangwryfan, 11 turbines, 70m to tip
 9. Mynydd Clogau, 17 turbines, 66m to tip
 10. Mynydd Gorddu, 19 turbines, 50m to tip
 11. Rhodri, 8 turbines, 45.5m to tip
- Consented Wind Farms**
12. Tirgwyn, 12 turbines, 116m to tip
- Wind Farms at Appeal/PLI**
13. Cemmaes 3, 12 turbines, 115m to tip
 14. Garreg Lywd Hill, 23 turbines, 126.5m to tip
- Wind Farms with Application Submitted**
15. Bodelith Isaf, 2 turbines, 125m to tip
 16. Bryngwyda, 12 turbines, 126.5m to tip
 17. Carno III, 18 turbines, 126.5m to tip
 18. Esgair Cwmowen, 18 turbines, 125m to tip
 19. Hirddwyll, 9 turbines, 125m to tip
 20. Nant y Moch, 62 turbines, 146.5m to tip
 21. Neuadd Goch Bank, 9 turbines, 126m to tip
 22. Penre Tump, 3 turbines, 103.5m to tip
 23. Reeves Hill, 4 turbines, 105m to tip
- Wind Farms at Design/Scoping Stage**
24. Bryn Tili Extension, 12 turbines, 0m to tip
 25. Bwch y Sarnau, 27 turbines, 0m to tip
 26. Dyfnant Forest, 32 turbines, 145m to tip
 27. Mynydd Mynydd, 24 turbines, 145m to tip
 28. Mynydd y Gwynn, 27 turbines, 125m to tip
 29. Pen Coad, 10 turbines, 110m to tip
 30. Rhodri Ddu and Mynydd Waun Fawr, 34 turbines, 126.5m to tip
- FIT Schemes within 5km of 5 PLI Wind Farms**
- A. Bailey Bog, 1 turbine, 20.4m to tip, Consented
 - B. Bryn Dadiau, 1 turbine, 19.5m to tip, Consented
 - C. Bryn David Fach, 1 turbine, 17.7m to tip, Consented
 - D. Brynddu, 2 turbines, 20.4m to tip, Consented
 - E. Brynmawr Cottage, 1 turbine, 17.7m to tip, Consented
 - F. Dudley Bank, 1 turbine, 20m to tip, Consented
 - G. Esgairdraenllwyn, 2 turbines, 34.6m to tip, Consented
 - H. Garreg, 1 turbine, 26m to tip, Consented
 - I. Garth Fawr, 1 turbine, 20.9m to tip, Consented
 - J. Hafod Frath, 2 turbines, 17.7m to tip, Consented
 - K. Hafodwen, 1 turbine, 20m to tip, Consented
 - L. Lower Ceulannau, 1 turbine, 17.7m to tip, Consented
 - M. New Chapel Farm, 1 turbine, 17.7m to tip, Consented
 - N. Pant yr Hendre, 1 turbine, 34.2m to tip, Consented
 - O. Sychtyn, 1 turbine, 21m to tip, Consented
 - P. Wern, 1 turbine, 35m to tip, Consented
 - Q. Bryn Cwmhieware, 1 turbine, 34.4m to tip, Application Submitted
 - R. Dugym Farm, 1 turbine, 34.4m to tip, Application Submitted
 - S. Dolfor 2, 1 turbine, 67m to tip, Design/Scoping



The Mid-Wales (Powys) Conjoined Wind Farms Public Inquiry
 Supplementary Environmental Information (SEI): Conjoined Cumulative Landscape and Visual - Graphics and Visualisations

Conjoined Cumulative Study Area Reference Plan

- Wind Farm Application Boundaries
- 5 PLI Schemes - Turbine Locations
 - Llanbrynmair, 30 turbines, 126.5m to tip
 - Carneid Wen, 50 turbines, 137m to tip
 - Llandinam Repowering, 34 turbines, up to 121.2m to tip
 - Llanbadarn Fynydd, 17 turbines, 125m to tip
 - Llithdru, 27 turbines, up to 115.5m to tip
- TAN 8 (SSA B, SSA C) 20km Study Area
- TAN 8 Strategic Search Areas (SSAc) (July 2005)
- TAN 8 Strategic Search Areas (SSAc) (PCC Redefined)
- Snowdonia National Park
- Area of Outstanding Natural Beauty (AONB)
- Planning Authority Boundary
- Conjoined Cumulative Viewpoint
 1. Plynlimon
 2. Kerry Ridgway, Two Tumps
 3. Garreg Hir
 4. Beacon Ring Hillfort
 5. Fron Top
 6. A470, Caersws
 7. B4518 South of St Harmon
 8. Foel Dinas
- Proposed Substation Locations
 - National Grid Potential Substation
 - Contracted Substation
 - SP Manweb Collector Substation (Options A - B)
- Existing Grid Connection
 - 400kV Overhead Network
 - 132kV Overhead Network
- SPEN Proposed Grid Connection Network
 - BNC - 132kV Wood Pole Line
 - BSC - 132kV Single Circuit Wood Pole Line
 - BSC/BNC
 - CC 1-4 - 132kV/33kV Single Circuit Wood Pole Line
 - Alternative Line Route Options
- National Grid Proposed Grid Connection Network
 - 400kV Draft National Grid Route - Overhead
 - 400kV Draft National Grid Route - Underground
- Llandinam Proposed Grid Connection
 - 132kV Proposed Llandinam Overhead Line Connection
- Other Proposed Grid Connections
 - SSE Grid Corridors (Nant-y-Moch)

Figure 11
 Map Scale @ A0: 1:125,000



The Mid-Wales (Powys) Conjoined Wind Farms Public Inquiry

Supplementary Environmental Information (SEI): Conjoined Cumulative Landscape and Visual - Graphics and Visualisations

Cumulative Zone of Theoretical Visibility (CZTV) for Five Conjoined Inquiry Wind Farms

- Wind Farm Application Boundaries
- 5 PLI Schemes - Turbine Locations**
 - Llanybrynmair, 30 turbines, 126.5m to tip
 - Carnedd Wen, 50 turbines, 137m to tip
 - Llandinam Repowering, 34 turbines, up to 121.2m to tip
 - Llanbadarn Fynydd, 17 turbines, 125m to tip
 - Llaithdu, 27 turbines, up to 115.5m to tip
- TAN 8 (SSA B, SSA C) 20km Study Area
- TAN 8 Strategic Search Areas (SSAc) (July 2005)
- TAN 8 Strategic Search Areas (SSAc) (PCC Redefined)
- Snowdonia National Park
- Area of Outstanding Natural Beauty (AONB)
- Planning Authority Boundary
- Conjoined Cumulative Viewpoint
 1. Plynlimon
 2. Kerry Ridge, Two Tumps
 3. Garreg Hir
 4. Beacon Ring Hillfort
 5. Fron Top
 6. A470, Caersws
 7. B4518 South of St Harmon
 8. Foel Dinas
- Proposed Substation Locations**
 - National Grid Potential Substation
 - Contracted Substation
 - SP Manweb Collector Substation (Options A - B)
- Existing Grid Connection**
 - 400kV Overhead Network
 - 132kV Overhead Network
- SPEN Proposed Grid Connection Network**
 - BNC - 132kV Wood Pole Line
 - BSC - 132kV Single Circuit Wood Pole Line
 - BSC/BNC
 - CC 1-4 - 132kV/33kV Single Circuit Wood Pole Line
 - Alternative Line Route Options
- National Grid Proposed Grid Connection Network**
 - 400kV Draft National Grid Route - Overhead
 - 400kV Draft National Grid Route - Underground
- Llandinam Proposed Grid Connection**
 - 132kV Proposed Llandinam Overhead Line Connection
- Other Proposed Grid Connections**
 - SSE Grid Corridors (Nant-y-Moch)
- Theoretical Visibility of Wind Farms**
 - SSA B - Llanybrynmair and Carnedd Wen
 - SSA C - Llandinam Repowering, Llaithdu and Llanbadarn Fynydd
 - SSA B and SSA C

Notes

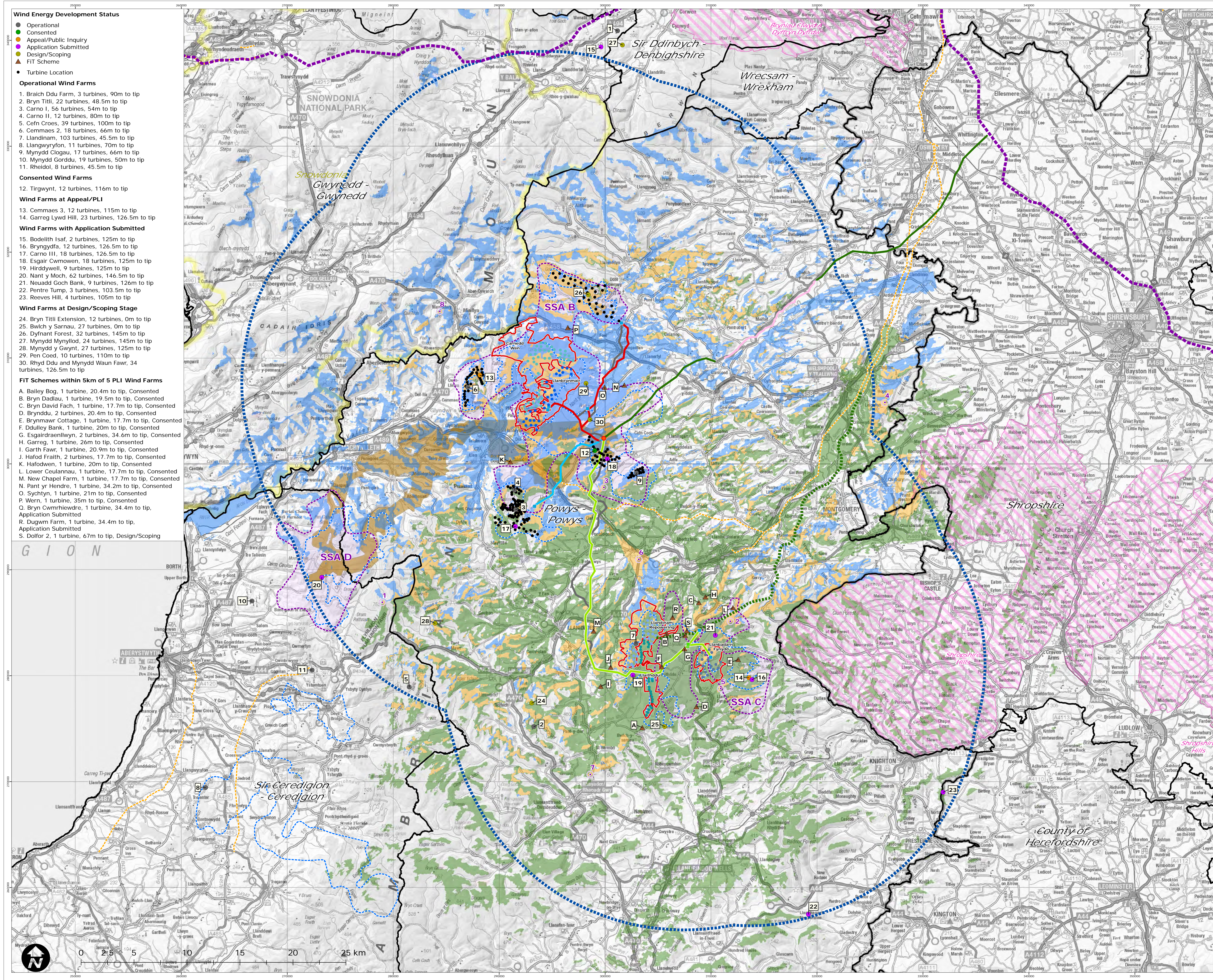
The CZTV is calculated to turbine tip height from a height of 2m above ground level.

The ZTV extents for all windfarms are based on SNH guidance (Visual Representation of Windfarms: Good Practice Guidance, SNH, 2006).

The terrain model is bare ground and derived from OS Terrain 50 height data.

The earth curvature and atmospheric refraction have been taken into account.

Figure 12
Map Scale @ A0: 1:125,000



- Wind Energy Development Status**
- Operational
 - Consented
 - Appeal/Public Inquiry
 - Application Submitted
 - Design/Scoping
 - FIT Scheme
 - Turbine Location
- Operational Wind Farms**
1. Braich Ddu Farm, 3 turbines, 90m to tip
 2. Bryn Tili, 22 turbines, 48.5m to tip
 3. Carno II, 56 turbines, 54m to tip
 4. Carno III, 12 turbines, 80m to tip
 5. Cefn Croes, 39 turbines, 100m to tip
 6. Cemmaes 2, 18 turbines, 66m to tip
 7. Llandinam, 103 turbines, 45.5m to tip
 8. Llangwryllon, 11 turbines, 70m to tip
 9. Mynydd Clogau, 17 turbines, 66m to tip
 10. Mynydd Gorddu, 19 turbines, 50m to tip
 11. Rhodri, 8 turbines, 45.5m to tip
- Consented Wind Farms**
12. Tirgwyn, 12 turbines, 116m to tip
- Wind Farms at Appeal/PLI**
13. Cemmaes 3, 12 turbines, 115m to tip
 14. Garreg Lywd Hill, 23 turbines, 126.5m to tip
- Wind Farms with Application Submitted**
15. Bodelith Isaf, 2 turbines, 125m to tip
 16. Bryngydyfa, 12 turbines, 126.5m to tip
 17. Carno III, 18 turbines, 126.5m to tip
 18. Esgair Cwmowen, 18 turbines, 125m to tip
 19. Hirdwywell, 9 turbines, 125m to tip
 20. Nant y Moch, 62 turbines, 146.5m to tip
 21. Neuadd Goch Bank, 9 turbines, 126m to tip
 22. Penre Tump, 3 turbines, 103.5m to tip
 23. Reeves Hill, 4 turbines, 105m to tip
- Wind Farms at Design/Scoping Stage**
24. Bryn Tili Extension, 12 turbines, 0m to tip
 25. Bwlch y Sarnau, 27 turbines, 0m to tip
 26. Dyfnant Forest, 32 turbines, 145m to tip
 27. Mynydd Mynydd, 24 turbines, 145m to tip
 28. Mynydd y Gwynllwy, 27 turbines, 125m to tip
 29. Pen Coad, 10 turbines, 110m to tip
 30. Rhyd Ddu and Mynydd Waun Fawr, 34 turbines, 126.5m to tip
- FIT Schemes within 5km of 5 PLI Wind Farms**
- A. Bailey Bog, 1 turbine, 20.4m to tip, Consented
 - B. Bryn Dadiau, 1 turbine, 19.5m to tip, Consented
 - C. Bryn David Fach, 1 turbine, 17.7m to tip, Consented
 - D. Brynddu, 2 turbines, 20.4m to tip, Consented
 - E. Brynmawr Cottage, 1 turbine, 17.7m to tip, Consented
 - F. Dudley Bank, 1 turbine, 20m to tip, Consented
 - G. Esgairdraenllwyn, 2 turbines, 34.6m to tip, Consented
 - H. Garreg, 1 turbine, 26m to tip, Consented
 - I. Garth Fawr, 1 turbine, 20.9m to tip, Consented
 - J. Hafod Fraith, 2 turbines, 17.7m to tip, Consented
 - K. Hafodwen, 1 turbine, 20m to tip, Consented
 - L. Lower Ceulannau, 1 turbine, 17.7m to tip, Consented
 - M. New Chapel Farm, 1 turbine, 17.7m to tip, Consented
 - N. Pant yr Hendre, 1 turbine, 34.2m to tip, Consented
 - O. Sychtyn, 1 turbine, 21m to tip, Consented
 - P. Wern, 1 turbine, 35m to tip, Consented
 - Q. Bryn Cwmhiewdre, 1 turbine, 34.4m to tip, Application Submitted
 - R. Dugym Farm, 1 turbine, 34.4m to tip, Application Submitted
 - S. Dolfor 2, 1 turbine, 67m to tip, Design/Scoping

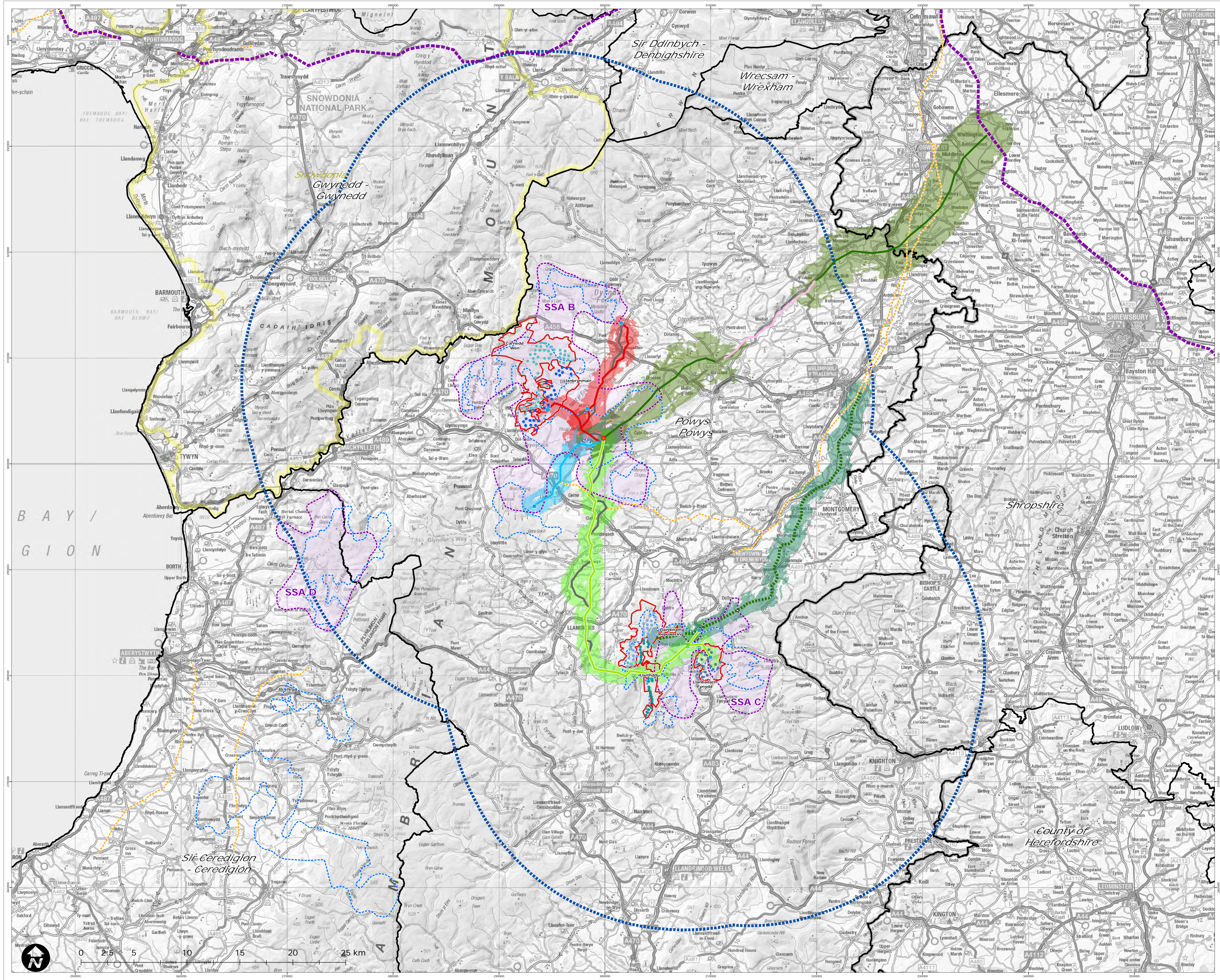
The Mid-Wales (Powys) Conjoined Wind Farms Public Inquiry
 Supplementary Environmental Information (SEI): Conjoined Cumulative Landscape and Visual - Graphics and Visualisations

Existing Grid Connection Network and Zone of Theoretical Visibility of Proposed Grid Connections

- Wind Farm Application Boundaries
- 5 PLI Schemes - Turbine Locations**
 - Llambrynair, 30 turbines, 126.5m to tip
 - Carnead Wen, 50 turbines, 137m to tip
 - Llanbadarn Repowering, 34 turbines, up to 121.2m to tip
 - Llanbadern Fynydd, 17 turbines, 125m to tip
 - Llaithdu, 27 turbines, up to 115.5m to tip
- TAN 8 (SSA B, SSA C) 20km Study Area
- TAN 8 Strategic Search Areas (SSAc) (July 2005)
- TAN 8 Strategic Search Areas (SSAc) (PCC Redefined)
- Snowdonia National Park
- Planning Authority Boundary
- Proposed Substation Locations**
 - National Grid Potential Substation
 - Contracted Substation
 - SP Manweb Collector Substation (Options A - B)
- Existing Grid Connection**
 - 400kV Overhead Network
 - 132kV Overhead Network
- SPEN Proposed Grid Connection Network**
 - BNC - 132kV Wood Pole Line
 - BSC - 132kV Single Circuit Wood Pole Line
 - BSC/BNC
 - CC 1-4 - 132kV/33kV Single Circuit Wood Pole Line
 - Alternative Line Route Options
- National Grid Proposed Grid Connection Network**
 - 400kV Draft National Grid Route - Overhead
 - 400kV Draft National Grid Route - Underground
- Llanbadarn Proposed Grid Connection**
 - 132kV Proposed Llanbadarn Overhead Line Connection
- Zone of Theoretical Visibility for Proposed Grid Connections**
 - National Grid Visibility - 47m Steel Tower
 - Llanbadarn Visibility - 14m Wood Pole
 - BNC Visibility - 14m Wood Pole/26m Steel Tower
 - BSC Visibility - 14m Wood Pole/26m Steel Tower
 - CC Visibility - 14m Wood Pole

Notes The ZTV is calculated to tip height of wood pole (14m) /steel tower (26m/47m) from a viewing height of 2m above ground level.
 The extents are based on 1km visibility for 14m wood pole and 2.5km from 26m/47m steel tower.
 The terrain model is bare ground and derived from OS Terrain 50 height data. Earth curvature and atmospheric refraction have been taken into account.

Figure 13
 Map Scale @ A0: 1:125,000



Blank Page